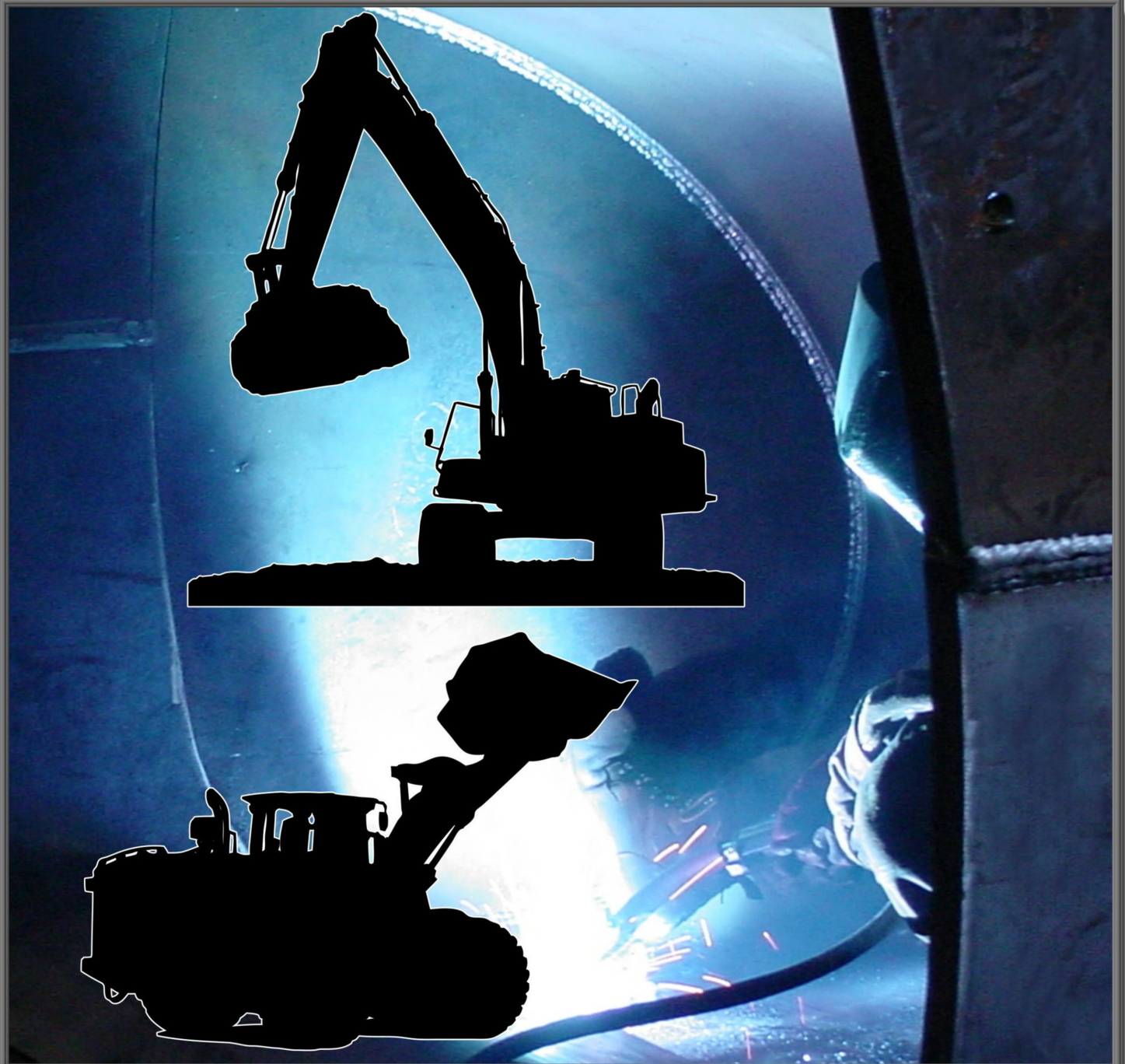




WE'RE IT.

Product Guide

Edition 8 • Volume 1



TAG Manufacturing, Inc. • Chattanooga, TN 37416

<https://tagmfg.us>



Rubber Tire Tractor Loader Buckets



**Heavy-Duty Deere OEM Style
Rear Backhoe Buckets**
Available For Most Other Manufactures



**Heavy-Duty Case OEM Style
Rear Backhoe Buckets**
For Case Rubber Tire Loader Backhoes



**Heavy-Duty " Ford Style "
New Holland Buckets**
For Rubber Tire Loader Backhoes



Severe Duty " V - Bottom " Buckets
For Rubber Tire Loader Backhoes



**Rail Road Cribbing Buckets
and Main Pin RR Thumbs**
For Rubber Tire Loader Backhoes



Ditching Buckets
For Rubber Tire Loader Backhoes



TAG Manufacturing, Inc. • Chattanooga, TN 37416
<https://tagmfg.us>



Manual Quick Couplers and Quick-Coupler Buckets

Adjust-A-Hook™

Quick-Coupler

US Patent No. 7,866,935

All Rights Reserved

**Mini Excavators Up to 18,000 lbs.
and Rubber Tired Loader Backhoes**

**Offered In Our QC27, QC30
Series Couplers • 100% Compatible
With All QB27, QB30 Buckets**

**Cast High-Strength
Alloy Center Increases
Strength 50%**



**Simple Turn-of-a-Bolt Adjustment
Offers Quick and Easy Adjustments to the Wear Areas of the Coupler**

Standard Non-Adjustable Couplers

**QC27, QC30 Series Couplers
2,500 lbs. to 18,000 lbs. Mini Excavators
And Rubber Tire Loader Backhoes**



**QC33/35
QC38/40
Series Couplers
Large RTL's and
20,000 lbs.
to 45,000 lbs.
Excavators**



TAG Manufacturing, Inc. • Chattanooga, TN 37416

<https://tagmfg.us>

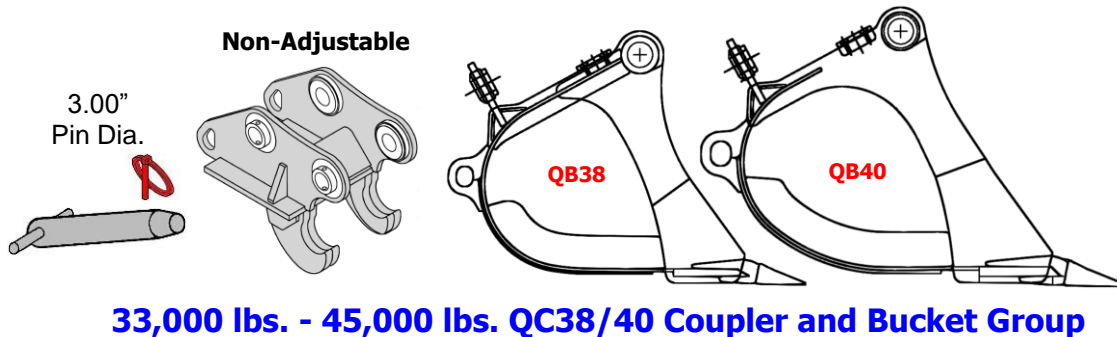
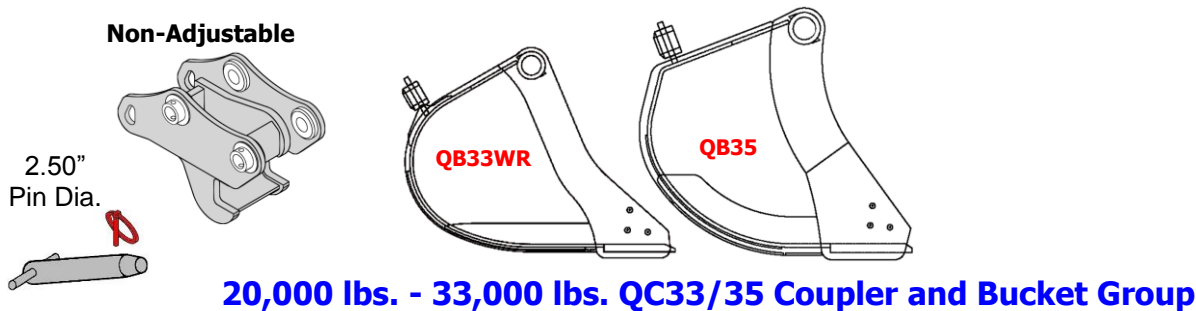


Manual Quick Couplers and Quick-Coupler Buckets

**Available for Mini & Large Excavators Up to 45,000 lbs.
and Rubber Tire Loader Backhoes**

- One Pin Simple and Fast Hook-Up With Low Profile Optimizes Digging Forces

**Larger Tube Wall Thickness
Increases Strength 50%**



TAG Manufacturing, Inc. • Chattanooga, TN 37416

<https://tagmfg.us>



TAG Quick Coupler Tilting Ditching Buckets and Auger Attachment

Available for Mini Excavators RTL Backhoes



Includes a Standard Load Check Valve To " Lock @ Any Angle "



Atypical Reference Attachments
Not Furnished By
TAG Manufacturing, Inc.

TAG Quick-Coupler Auger Attachment

Available With Most Industry Standard Auger Top Hook-Up / Pin-Up

TAG Manufacturing, Inc. • Chattanooga, TN 37416

<https://tagmfg.us>





TAG Mini Excavator Buckets

1,500 lbs. to 18,000 lbs.



Mini Excavation Buckets Are Available In Various Widths and Available With Several Teeth Options

Ditching Buckets Are Available As Smooth Lip, or Optional Bolt-On Cutting Edge



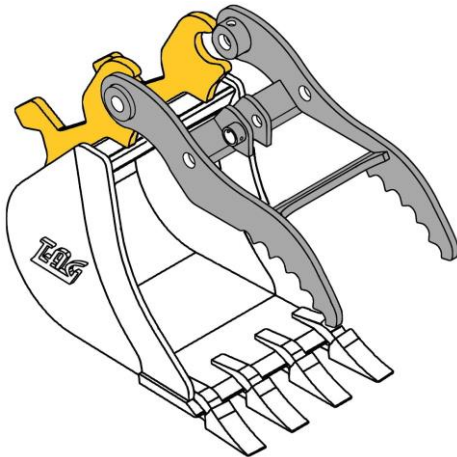
TAG Manufacturing, Inc. • Chattanooga, TN 37416

<https://tagmfg.us>



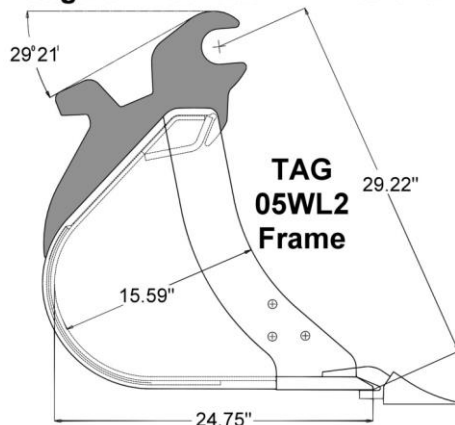
Deere-Hitachi Wedgelok Coupler Buckets and Main-Pin Hydraulic Thumbs

For Deere-Hitachi 17, 26, 27,
30, 35, 50 & 60 Series CWP Excavators
Available in Excavation and Ditching Style

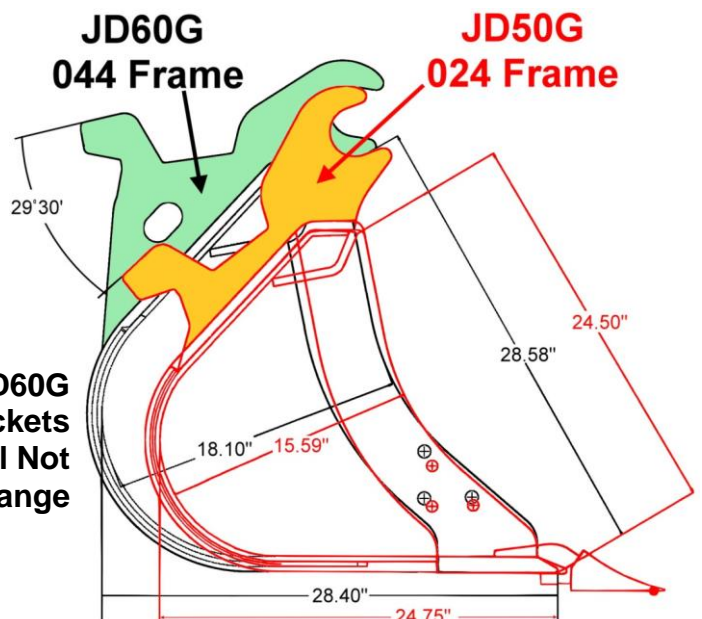


**TAG Deere CWP Main-Pin Hydraulic
Thumbs Includes Cylinder That
Fits OEM Cylinder Brackets
and Includes Hose Group**

JD26, JD27, JD30 & JD35
Wedgelok Buckets Will Interchange



JD50G / JD60G
Buckets
Will Not
Interchange



TAG Manufacturing, Inc. • Chattanooga, TN 37416

<https://tagmfg.us>



Specialty Mini Excavator and RTL Buckets & Attachments



Coral Rock Buckets

Mini Excavators • RTL Backhoes
Severe-Duty • H. D. Cutting Edges



Heavy Duty Single Shank Rippers

Excavators 1,500 lbs. to 20,000 lbs. • RTL Backhoes



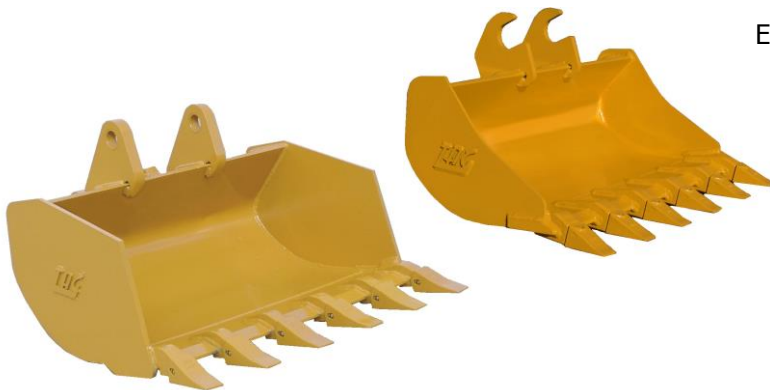
Kubota Style Quick-Coupler Buckets

Compact Excavators



Trapezoidal Ditching Buckets

Excavators 6,000 lbs. to 18,000 lbs. • RTL Backhoes



Cemetery " Bell-Hole " Buckets

Compact Excavators & RTL Backhoes
Pin-On, TAG QC, Deere Wedgelok Coupler
and Kubota Coupler



Universal Top Mounts

Pin-On, TAG QC, Deere Wedgelok Coupler
and Kubota Coupler
For Breakers, Mowers, and Grinders

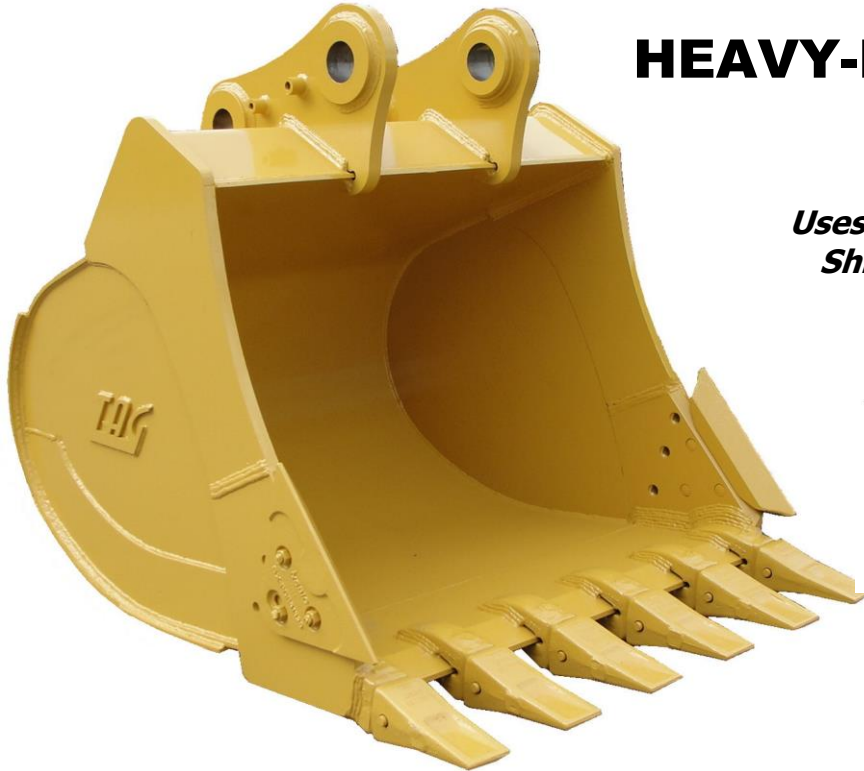


TAG Manufacturing, Inc. • Chattanooga, TN 37416

<https://tagmfg.us>

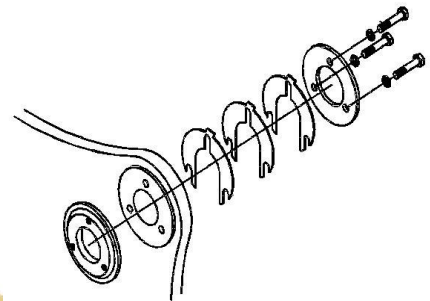


Heavy-Duty and Severe-Duty Excavator Buckets



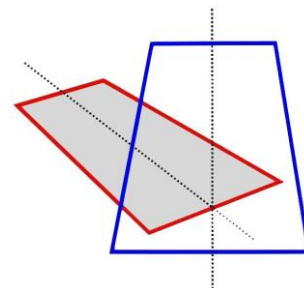
HEAVY-DUTY

Play-Adjustment
Uses Thumb-Tab "Horse-Shoe"
Shims To Make Adjustments



SEVERE-DUTY

Double Radius
Dual Tapered Profiles
Bottom To Top Taper
Front to Rear Taper



TAG Manufacturing, Inc. • Chattanooga, TN 37416

<https://tagmfg.us>



Super Extreme Duty Mining and Mass-X™ Buckets



Series

**Extra Thickness Plates,
Cast Alloy Heel Plates
And Vertical Shrouds
Rear AR450 Wear Strips**



MASSX™

**Elongated High Capacity Profile
AR450 Construction
Offers a Lighter Bucket Weight
For MAX Production**

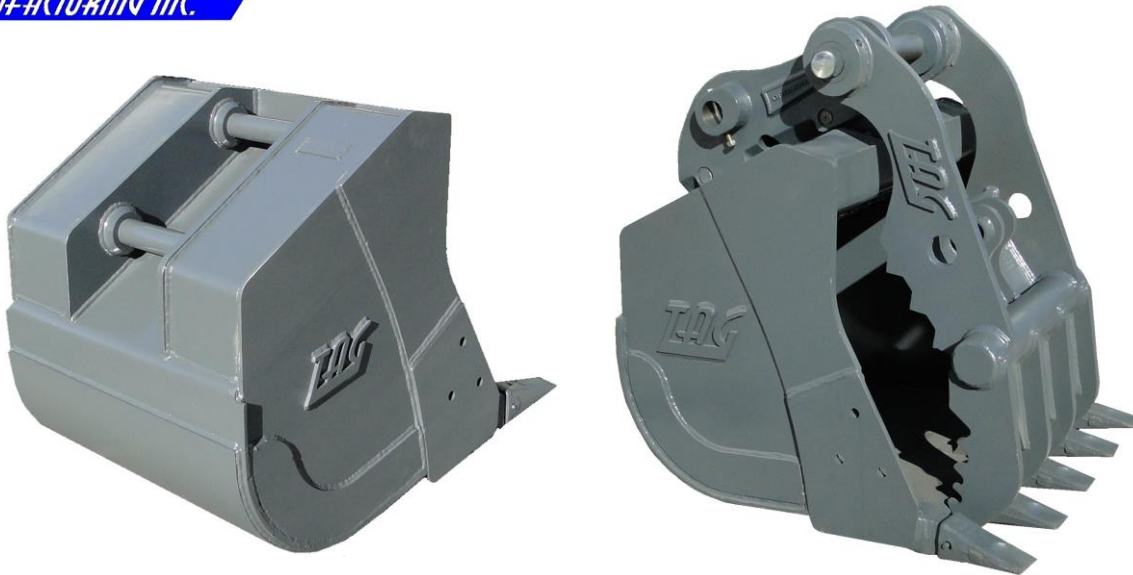


TAG Manufacturing, Inc. • Chattanooga, TN 37416

<https://tagmfg.us>



Excavator Specialty Buckets And Attachments



Integral Pin Low-Profile Heavy-Duty Quick-Coupler Buckets

Excavators 24,000 lbs. to 60,000 lbs.



Universal Top Mounting Brackets

Excavators 24,000 lbs. to 160,000 lbs.



Atypical Reference Attachments
Not Furnished By
TAG Manufacturing, Inc.



TAG Manufacturing, Inc. • Chattanooga, TN 37416

<https://tagmfg.us>



Excavator Specialty Buckets And Attachments



" Duck-Bill " Teeth Buckets
Additional " Duck-Bill / Flared Teeth "



Severe Duty " Rock-Ripping " Buckets
Excavators 40,000 lbs. to 120,000 lbs.



Heavy Duty Skeleton Buckets
Excavators 14,000 lbs. to 120,000 lbs.



Saber Tooth Stump Shear
Excavators 33,000 lbs. to 120,000 lbs.

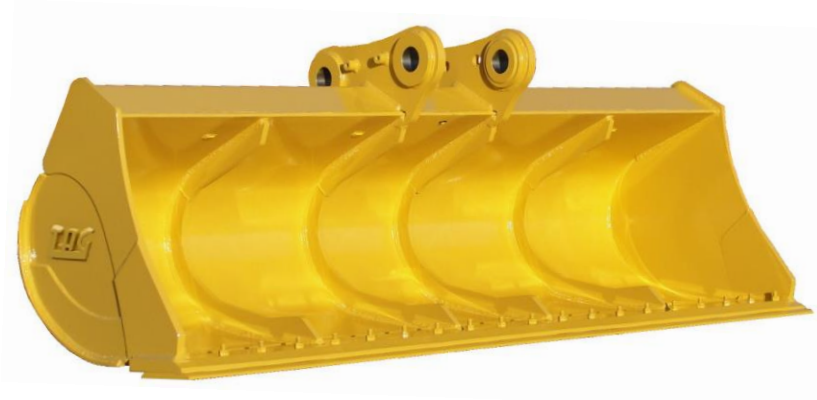


TAG Manufacturing, Inc. • Chattanooga, TN 37416

<https://tagmfg.us>



Excavator Specialty Buckets And Attachments



Super-Wide Heavy Duty Ditching Buckets

Large Excavators with Standard and Long Fronts



Aquatic Ditching Buckets

Large Excavators with Standard and Long Fronts



Volvo® S1, S2, S3, and S6 SQF Buckets

Large Excavators & Wheeled Excavators



TAG Manufacturing, Inc. • Chattanooga, TN 37416

<https://tagmfg.us>



Excavator Specialty Buckets And Attachments

Direct Pin-On
or Used With
a Pin-Grabber
Quick-Coupler



Shown Is a
Hydraulic
Grapple
Mounted
In a Coupler



3 Over 2 and 4 Over 3 Grapples
Hydraulic, or Manual

Mini To Large Excavators 8,000 lbs. to 100,000 lbs.

Heavy Duty Excavator Grapple Rakes

Excavators 24,000 lbs. to 120,000 lbs.



Designed For Use With Quick-Couplers

Easy Attachment Installation Requires
No Welding and Includes Coupler Mounting Pins
Excavators 30,000 lbs. to 100,000 lbs.

Fully Independent Mantis™ Thumbs
Allows Clamping of Uneven Loads



TAG Manufacturing, Inc. • Chattanooga, TN 37416

<https://tagmfg.us>



Excavator Specialty Buckets And Attachments



Pavement Removal Tools

Excavators 12,000 lbs. to 120,000 lbs.

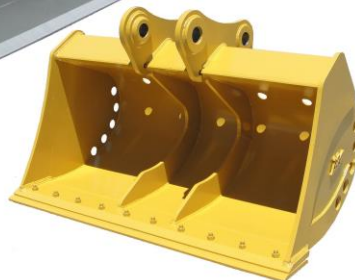


Heavy Duty Single Shank Ripper

Excavators 24,000 lbs. to 120,000 lbs.
Fabricated from A514 " T-1" Alloy Steel



**Optional
" Hole Packages "**
Available



Ditching Buckets

24,000 lbs. to 80,000 lbs.
Standard and Long-Reach



Trapezoidal Buckets

Excavators 24,000 lbs. to 80,000 lbs.
Available In Several Slopes Ratios
and With Bolt-On Edge



TAG Manufacturing, Inc. • Chattanooga, TN 37416

<https://tagmfg.us>



Mini and Large Excavator Pin-Grabber Manual and Hydraulic Quick Couplers



Mini Excavator Manual Pin-Grabber Quick-Coupler

Sturdy " Spring-Latch " Pin-Grabber Coupler Offers Broad Versatility
Mini's 4,000 lbs. - 18,000 lbs. • JD710 Rubber Tire Backhoe



Manual Screw Pin-Grabber Quick-Coupler

Strong, Uncomplicated " Slide " Coupler With
Robust Straight Tread Screw That Moves the
Locking Jaw to Un-Lock and Lock Attachments Quickly
Excavators 24,000 lbs. to 40,000 lbs.



In-Cab Visual Prop-Lock

Auto-Lock Hydraulic Pin-Grabber Quick-Coupler

Attachments are Safely Released and Secured from
Inside the Cab
Auto-Lock Hydraulic Quick-Couplers Have a Redundant
Hydraulic Check-Valve on the Internal Actuating and
Locking Cylinder that Increases the Securing of the
Attachment
Superior Breakout Forces With Industry Leading Low
Vertical Profiles and Horizontal Offsets
Excavators 24,000 lbs. to 180,000 lbs.



In-Cab Controls



Load Check Valve

Un-Locking & Locking Procedure: All Controls are Cab-Mounted. Simple Procedures to Unlock the Safety Prop-Lock and Locking-Lever to Disengage the Attachment.. The Coupler is Rotated Out and In of the Attachment to Dis-engage, or Re-engage Attachments. Locking the Attachment is a Reverse Procedure and with the Double Redundancy of the Visual Prop-Lock and a Hydraulic Cylinder Load Check Valve Securing the Attachment



TAG Manufacturing, Inc. • Chattanooga, TN 37416

<https://tagmfg.us>



Mini and Large Excavator Hydraulic Pin-Grabber Multilock Quick Couplers

**Hydraulic Multilock Pin-Grabber Quick-Coupler
8,000 lbs. - 90,000 lbs.**



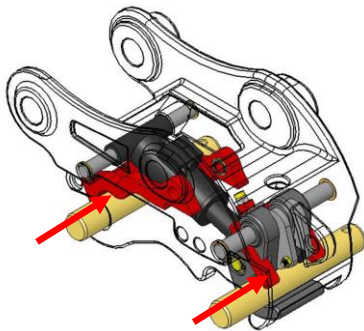
DROMONE
intelligent:innovation
Multilock MQC™

**MAXIMUM RANGE
of Attachment Pick-Up
Covering a Large Variety
of Different Manufacturer's
Attachments and With
Different Pin Diameters and
Different Pin-Centers**



Fully Compliant: EU474, AS.4772-2008, ISO 13031 & 9001

- Attachments are Safely Released and Secured from Inside the Cab
- Multilock Hydraulic Quick-Couplers Have a Redundant Hydraulic Check-Valve on the Internal Actuating and Locking Cylinders that Increases the Securing of the Attachment
- Superior Breakout Forces With Industry Leading Low Vertical Profiles and Horizontal Offsets



**In-Cab Visual Locking
Mechanisms**

**Both the Front and
Rear Attachment Pins
Are Independently
Mechanically Locked
Throughout the Full
Operating Cycle**

**And Are Hydraulically
Released Separately**

**Load
Check
Valve**



In-Cab Controls



Un-Locking & Locking Procedure: All Controls are Cab-Mounted. Simple Procedures to Unlock the Safety Prop-Lock and Locking-Lever to Disengage the Attachment. The Coupler is Rotated Out and In of the Attachment to Dis-engage, or Re-engage Attachments. Locking the Attachment is a Reverse Procedure and with the Double Redundancy of the Visual Locking Mechanisms and a Hydraulic Cylinder Load Check Valve Securing the Attachment



TAG Manufacturing, Inc. • Chattanooga, TN 37416

<https://tagmfg.us>



Heavy-Duty Weld-On Manual Thumbs Track-N-LOCK™

Stick-Mounted Design

2,500 lbs. to 80,000 lbs.

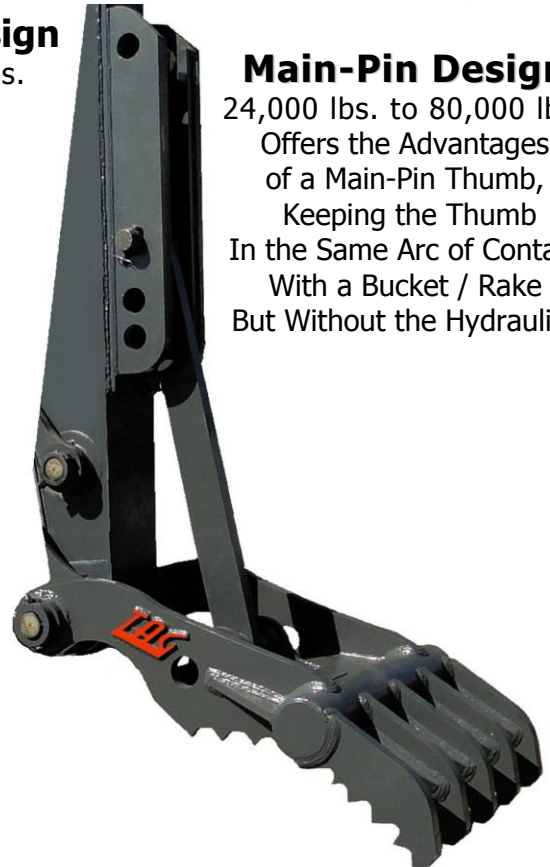
Link Always Stays
"In-the-Track"
and Folds the Thumb
Extremely Flat Against
Dipperstick When
Not In Use



Main-Pin Design

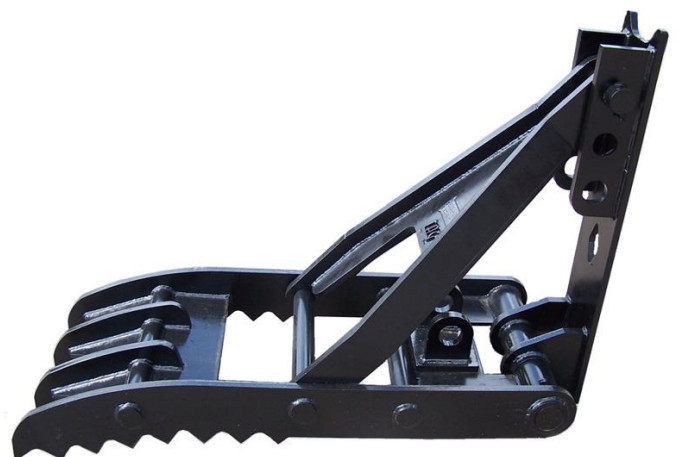
24,000 lbs. to 80,000 lbs.

Offers the Advantages
of a Main-Pin Thumb,
Keeping the Thumb
In the Same Arc of Contact
With a Bucket / Rake
But Without the Hydraulics



Y-Yoke Rigid Thumbs for Mini Excavators

2,500 lbs. to 16,000 lbs.



Y-Yoke Rigid Thumbs for Large Excavators

24,000 lbs. to 80,000 lbs.



TAG Manufacturing, Inc. • Chattanooga, TN 37416

<https://tagmfg.us>



Mini, RTL Backhoe And Excavator Hydraulic Thumbs

Weld-On Stick Mounted Hydraulic Thumbs

2,500 lbs. to 80,000 lbs. Mini and Large Excavators / RTL Backhoes

Not Designed For Use With Quick-Couplers

**Standard
Two Finger Design**
Recommended For
All Applications



***Weld-on Hydraulic Thumb Rotation
Approx. 120° Rotation***



**Custom
Matched Design**
24,000 lbs. to 80,000 lbs.
Available In Limited
Bucket Widths

Mini Excavator / RTL Backhoe Main-Pin Hydraulic Thumbs

2,000 lbs. to 20,000 lbs.

Many Applications Are a Direct Fit and Work With Factory Brackets and Auxiliary Lines

Broad Two Finger Design Offers
Excellent Clamping Forces



Thumb Bodies Are Extended
for Pin-Grabber Quick-Couplers



TAG Manufacturing, Inc. • Chattanooga, TN 37416

<https://tagmfg.us>



Main-Pin Hydraulic Thumb



**Main-Pin Thumb Rotation
Approx. 120° Rotation**

**Either Thumb Design Is Available With
Extended Length for Quick-Couplers**

Heavy Duty Main-Pin Thumbs

24,000 lbs. to 100,000 lbs.

QUICK-Link™

**Main-Pin Hydraulic Thumb
With Unitized Links and Cylinder Assembly**



**Maximum Range of Rotation
from 165°, Up to an Industry
Leading 205° of Rotation**



TAG Manufacturing, Inc. • Chattanooga, TN 37416

<https://tagmfg.us>



Heavy Duty Wheel Loader Hydraulic Quick-Couplers

**Full Range of Applications for RTL Backhoes,
Compact, To Large Wheel Loaders**

Available QC Hook-Ups

- **JRB® "E" Series**
- **JRB® 580 Series**
- **JRB® 84 Series**
- **JRB® 416 Series**
- **JRB® 418 Series**
- **JRB® 420 Series**
- **JRB® 422 Series**
- **CAT® IT12-IT28**
- **CAT® IT38**
- **Balderson Series**
- **Volvo® L25-L30**
- **Volvo® L35-L45**
- **Volvo® ISO L50-L120 ~**
- **John Deere™ "Hi-Vis" ~**
~ Same Attachment Pick-Up
- **Volvo® L150-L220**
- **John Deere™ "Work-Pro"**
- **Komatsu® "WB Series"**
- **Komatsu® Compact QC**
- **ACS® 1000 – Pro 2000**
- **Hyundai® Series**



Includes Machine Specific
O.E.M. Interface Hydraulic Kit

**"Combo" Applications Available
To Have a Base Machine "Pick-Up" Another
Manufacture's Attachments**

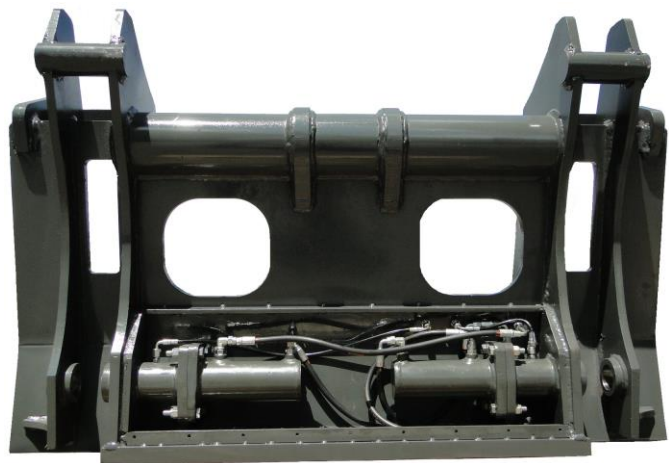
TAG XTREME-DUTY™

**Twin-Cylinder Design
Couplers For the Most
Demanding Applications**

Class 300 to 800 Loaders

**Also Recommended For
Volvo ISO, or Deere Hi-Vis Loaders
Plus All Forestry, Mulch,
and Re-Cycling Applications**

Includes Full Cylinder Guard

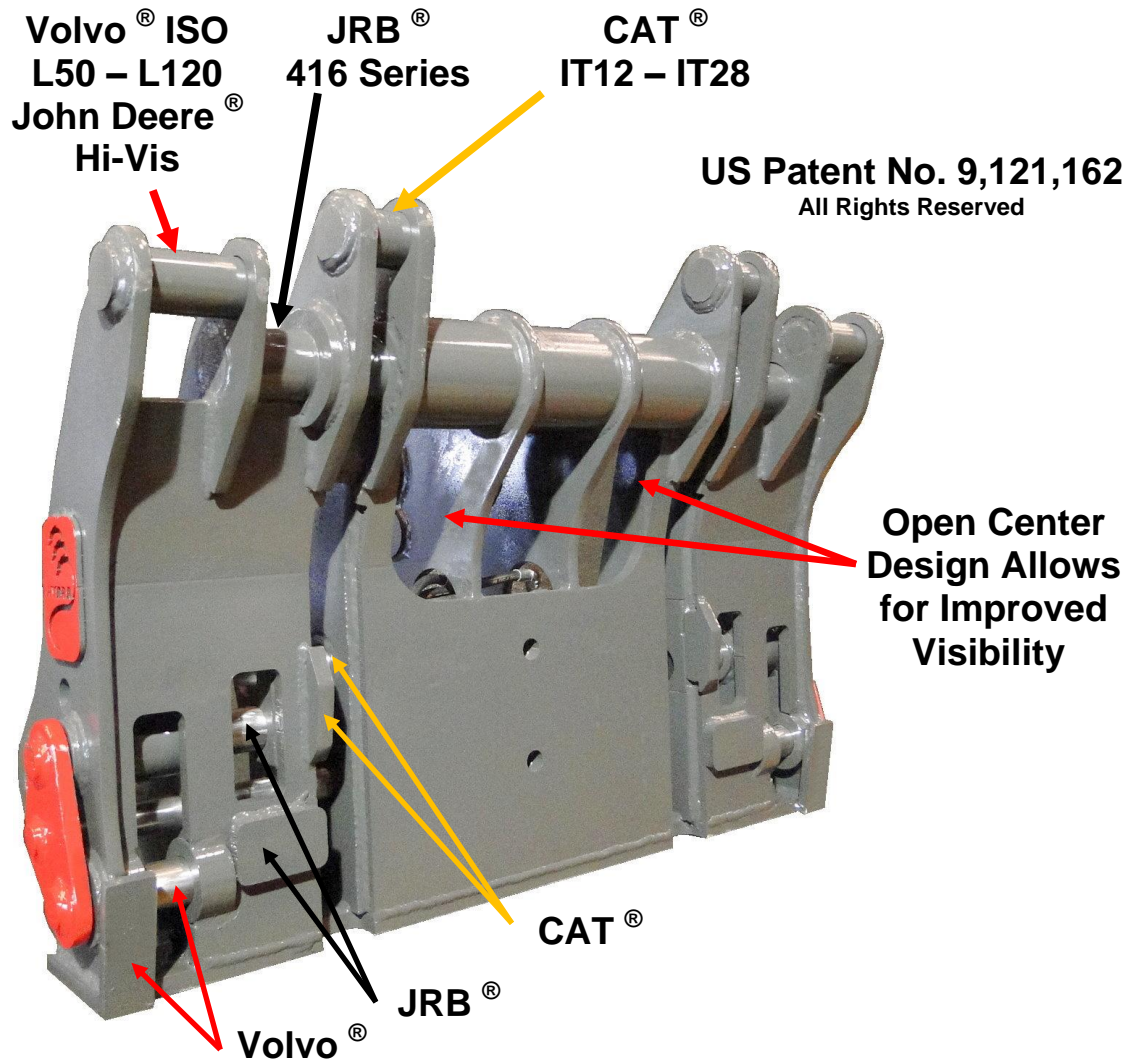


TAG Manufacturing, Inc. • Chattanooga, TN 37416

<https://tagmfg.us>



TAG's New HYDRA Multi-Coupler™ will give any Class 200 to 500 Wheel Loader the Capability to Attach to the Three Main Coupler Systems in the Market Today With Just One Hydraulic Coupler



Disclaimer: The Technical Information Provided in this Brochure Shall Remain the Exclusive Intellectual Property of TAG Manufacturing, Inc., Chattanooga, TN 37416

TAG Manufacturing, Inc. • Chattanooga, TN 37416

<https://tagmfg.us>





Wheel Loader Attachments



General Purpose Buckets

Standard and Larger Capacities Available
Pin-on • Quick-Coupler, O.E.M. Cutting Edges



Light Material Large Capacity Buckets

Optional Solid, or Wire Mesh Opening Spill Plate
Pin-on • Quick-Coupler, O.E.M. Cutting Edges



General Purpose Buckets with Bolt-on Teeth

Various GET Systems Available • Bolt-on Segments
Pin-on • Quick-Coupler, O.E.M. Cutting Edges



Wood-Chip Large Capacity Buckets

Optional Solid, or Wire Mesh Opening Spill Plate
Pin-on • Quick-Coupler, O.E.M. Cutting Edges



TAG Manufacturing, Inc. • Chattanooga, TN 37416

<https://tagmfg.us>



Wheel Loader Attachments

XTMTENDED PERFORMANCE

Material Re-Handling Performance Buckets

Pin-on • Quick-Coupler, O.E.M. Cutting Edges
Special Design With a Deeper " Longer Floor "
and Greater Side Plate " Attack Angles "
To Enhance Material Penetration and Loading



Mega High Capacity Light-Weight Material and Coal Re-Handling Buckets

Pin-on • Quick-Coupler, O.E.M. Cutting Edges

**Increased Widths to Lower
Bucket Height For Improved
Visibility**



Disclaimer: The Technical Information Provided in this Brochure Shall Remain The Exclusive Intellectual Property of TAG Manufacturing, Inc., Chattanooga, TN 37416

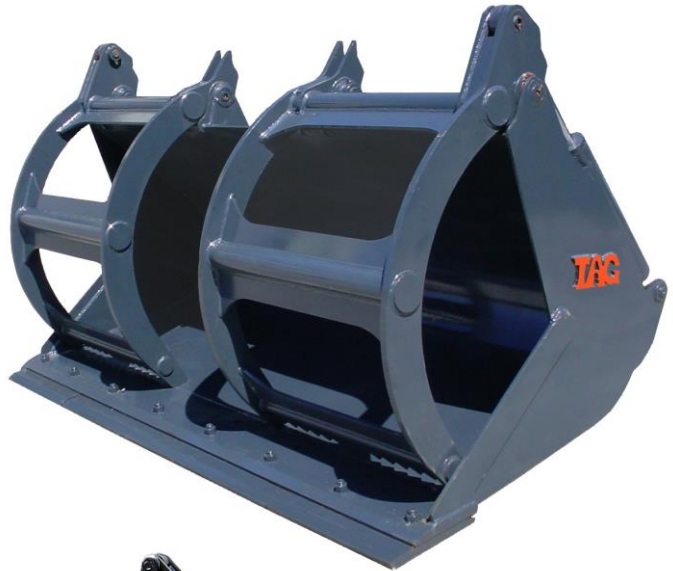


TAG Manufacturing, Inc. • Chattanooga, TN 37416

<https://tagmfg.us>



Wheel Loader Attachments



**Available for
Compact Wheel Loaders**
• RTL Backhoes

Grapple Buckets with (2) Independent Top Clamps

Pin-on • Quick-Coupler, O.E.M. Cutting Edges
Optional Full, Half, or Cut-a-Way Sides
Optional Enclosed Clamps with Solid Plating, or Expanded-Metal
Requires 3rd Function Hydraulics

NOTE: *Primary Application Designed For General-Duty Debris Clean-Up and Light-Weight Loose Materials
For Continuous Duty-Cycle Applications Please Refer To Our Heavy-Duty Recycling Grapple Buckets*



TAG Manufacturing, Inc. • Chattanooga, TN 37416

<https://tagmfg.us>



Wheel Loader Attachments



Heavy-Duty Recycling / Waste Transfer Station Grapple Buckets

**Duty-Cycle Heavy-Duty Robust " Ladder-Style " Clamps
With Larger Hinge Pins and Clamp Stops**

Pin-on • Quick-Coupler • O.E.M. Cutting Edges
Requires 3rd Function Hydraulics



Pushing Profile

**Optional Solid, or Laminated
Rubber Edges & Rear Wear Pads**



Loading Profile

Waste Transfer Station Large Capacity Buckets Optional Pushing, or Loading Configuration

Pin-on • Quick-Coupler • O.E.M. Cutting Edges

TAG Manufacturing, Inc. • Chattanooga, TN 37416

<https://tagmfg.us>





Wheel Loader Attachments



Heavy-Duty Multi-Purpose " 4 in 1 " Buckets

Pin-on • Quick-Coupler • O.E.M. Cutting Edges
and Various G.E.T. Tooth Systems Available
Requires 3rd Function Hydraulics

**Straighter
12°-15°
Sides**



Special Low-Profile High Capacity Fertilizer / Agriculture Buckets

Pin-on • Quick-Coupler • O.E.M. Cutting Edges
**Designed for Maximum Retention of
Agriculture Products**



ACS® Series 1000 and Pro Series 2000 Quick-Coupler Buckets And Attachments

Direct Compatibility With Existing ACS® Coupler Systems
Plus a Full Complement of All Other Wheel Loader Attachments Including Buckets, Forks & Booms

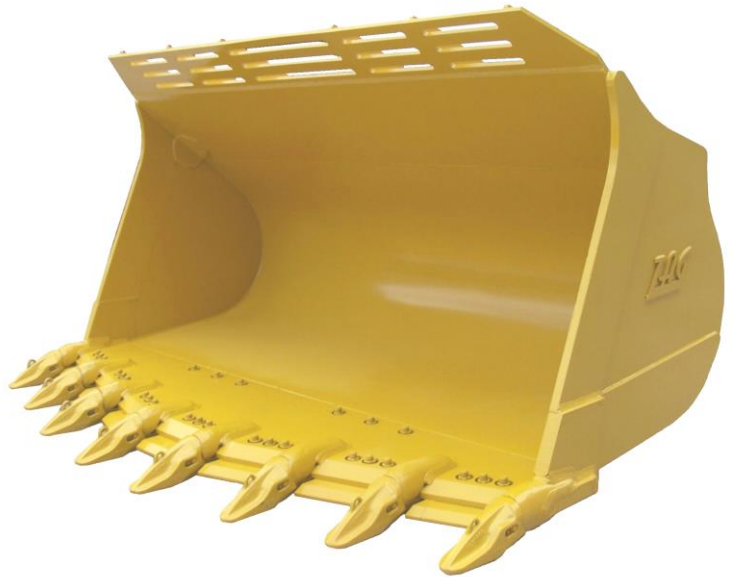


TAG Manufacturing, Inc. • Chattanooga, TN 37416

<https://tagmfg.us>

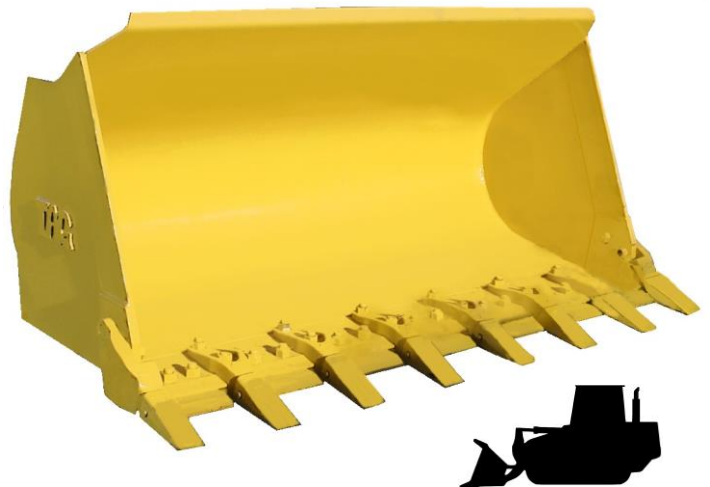
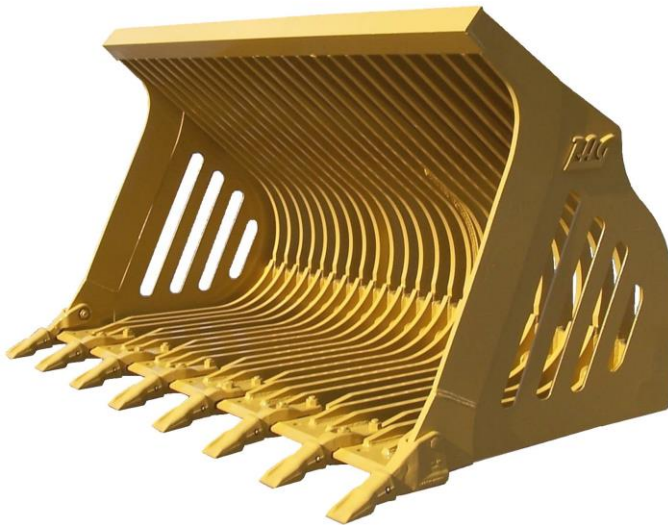


Wheel Loader Attachments



Heavy-Duty Straight-Lip Rock Buckets or Spade-Nose Rock Buckets

Various Tooth Systems Available • Weld-on Shanks and Teeth • Option Bolt-on, or Weld-on Segments,
or O.E.M. Bolt-on Cutting Edges and H.D. Rear Wear Plates



Heavy-Duty Skeleton Buckets

Pin-on • Quick-Coupler
Optional Tine Spacing and Tine Thickness
Weld-on , or Bolt-on Shanks • Bolt-on Segments
or Bolt-on Edges

Crawler Loader G.P. Buckets

Pin-on • Quick-Coupler
Weld-on , or Bolt-on Shanks • Bolt-on Segments



TAG Manufacturing, Inc. • Chattanooga, TN 37416

<https://tagmfg.us>



Wheel Loader Attachments

Super Extreme Duty Mining Buckets for Large Wheel Loaders

**Available With Custom GET Options
and Full Mining Packages**

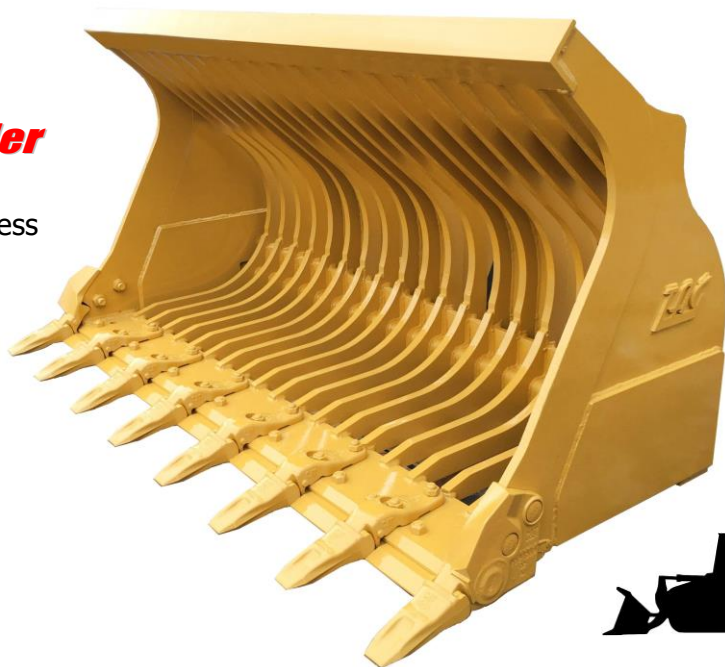


Series



Extreme Duty Track Loader Skeleton Bucket

**Optional Tine Spacing and Tine Thickness
Weld-on , or Bolt-on Shanks
Bolt-on Segments**



TAG Manufacturing, Inc. • Chattanooga, TN 37416

<https://tagmfg.us>



Wheel Loader Attachments



Severe-Duty Hot Slag Straight-Lip, or Spade-Nose Hot Slag Buckets

Extra-Thick Construction of Special Alloy Steels to Resist Intense Heat and Cracking
Various G.E.T. Tooth Systems Available with Weld-on Shanks and Teeth
Option Bolt-on, or Weld-on Segments



Heavy-Duty Smelter Charge-Chute Buckets

Designed To Load Ferrous Scrap, and Non-Ferrous Scrap, Plus Chemical Additives Into Smelters
Extra-Thick Construction of Special Alloy Steels to Resist Intense Heat and Cracking
Pin-on • Quick-Coupler

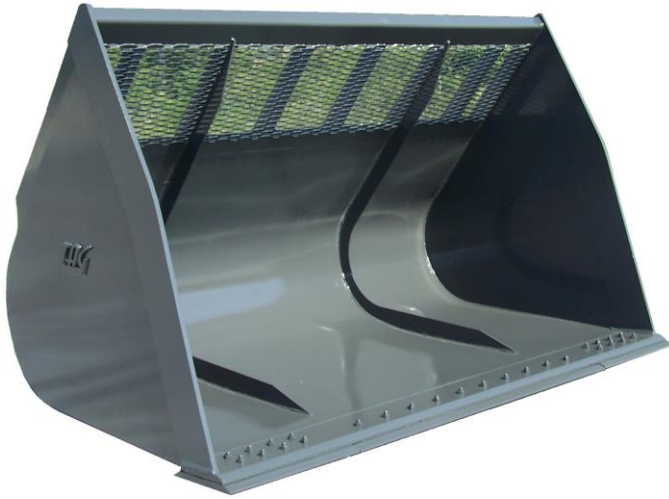


TAG Manufacturing, Inc. • Chattanooga, TN 37416

<https://tagmfg.us>



Wheel Loader Attachments



Bark or Mulch Large Capacity Light-Weight Buckets

Pin-on • Quick-Coupler • O.E.M. Cutting Edges



Mega High Capacity Ultra Light-Weight Wood Chip Buckets

Pin-on • Quick-Coupler • O.E.M. Cutting Edges



Side Dump Buckets

Available for Compact Wheel Loaders • RTL Backhoes

LH Dumping, or RH Dumping • Pin-on • Quick-Coupler
Requires 3rd Function Hydraulics

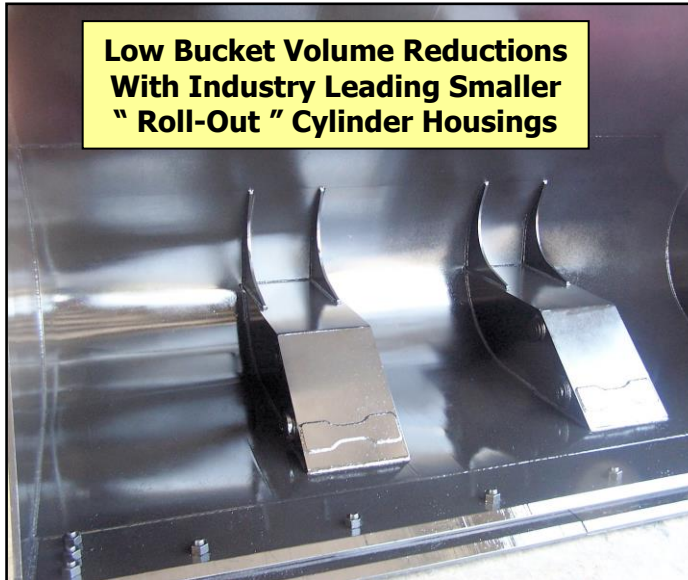


TAG Manufacturing, Inc. • Chattanooga, TN 37416

<https://tagmfg.us>



Wheel Loader High Tip Roll-Out Buckets



**Low Bucket Volume Reductions
With Industry Leading Smaller
" Roll-Out " Cylinder Housings**



**Open Cylinder
Sub-Carriage Reduces
Material Build-Up**

**Maximum
50° Dump**

**TAG Exclusive Features with Maximum Outboard Spread of Twin-Cylinders
for Fast and Reliable Raising and Dumping of the Bucket, Resists Twisting and
Flexing of the Carriage and the Bucket for Trouble Free Service**

Pin-on • Quick-Coupler • O.E.M. Cutting Edges



Available With Euro Sides and Rear Vent
Slots To Better Handle Dry Wood Chips



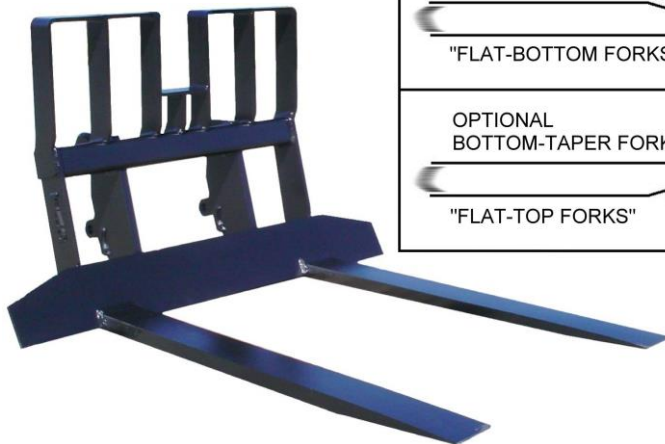
TAG Manufacturing, Inc. • Chattanooga, TN 37416

<https://tagmfg.us>



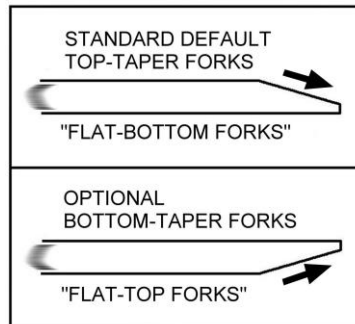
Wheel Loader Attachments

Shown with Optional
24" ISO Rack / Guard



Heavy-Duty Carbody Forks

Pin-on • Quick-Coupler
Optional Top Guard



Available for Compact
To Large WL • RTL Backhoes



Heavy-Duty Construction Forks

Pin-on • Quick-Coupler

" Pipeline / Skidder-Tire Specials "
Available With Wider Fork Carriages and Height Adjusted
Hook-Ups For Larger Diameter Skidder Tires

Available for Compact
WL • RTL Backhoes



Heavy-Duty Hydraulic Side-Shift Forks

Pin-on • Quick-Coupler, Requires 3rd Function



Heavy-Duty Logging Forks

Pin-on • Quick-Coupler
Heavier Carriages and Reinforcements
Available with " Independent Oscillating Tines "



TAG Manufacturing, Inc. • Chattanooga, TN 37416

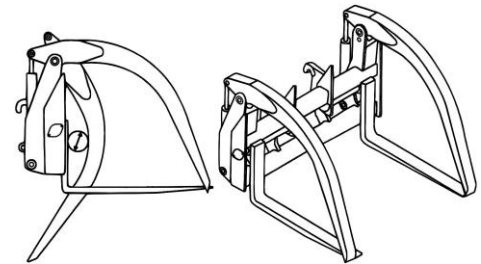
<https://tagmfg.us>



Wheel Loader Attachments

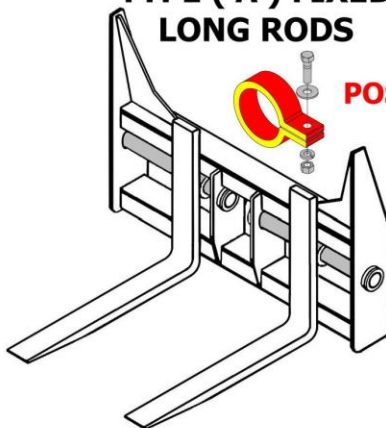
Heavy-Duty Log and Lumber Forks With Paddle Top Clamp

Requires 3rd Function Hydraulics
Pin-on, or Quick-Coupler



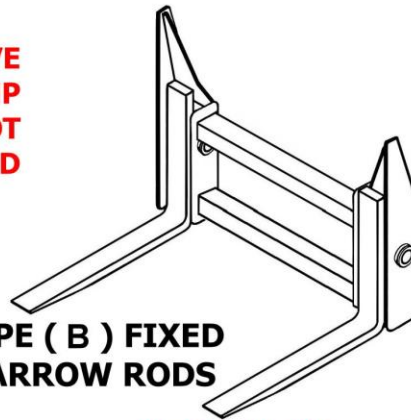
Available Double Independent
Top Clamps

**TYPE (A) FIXED
LONG RODS**

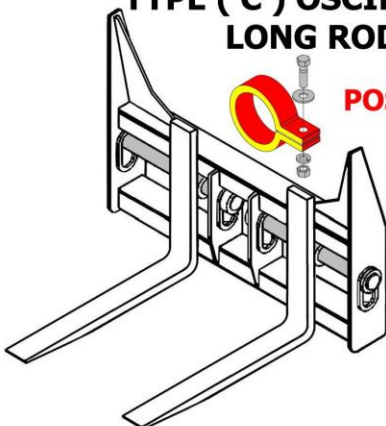


**EXCLUSIVE
POSITION CLAMP
DOES NOT
DAMAGE ROD**

**TYPE (B) FIXED
NARROW RODS**

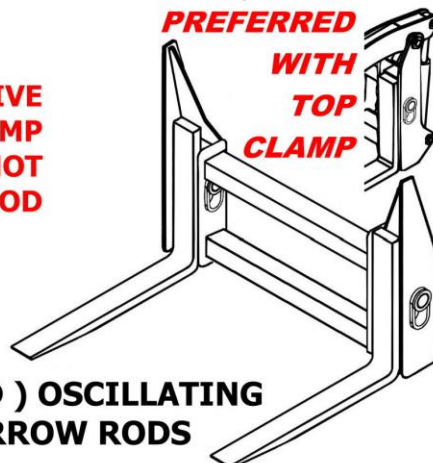


**TYPE (C) OSCILLATING
LONG RODS**



**EXCLUSIVE
POSITION CLAMP
DOES NOT
DAMAGE ROD**

**PREFERRED
WITH
TOP
CLAMP**



**TYPE (D) OSCILLATING
NARROW RODS**

Available Hanger Rod
Configurations For Both
Log & Lumber Forks and
Logging Forks With
Top Clamp To
Suit the Application



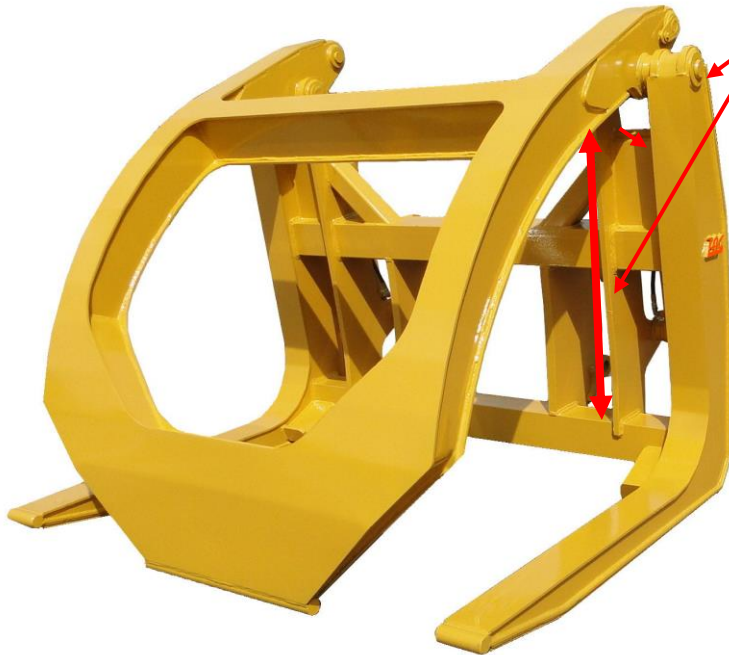
TAG Manufacturing, Inc. • Chattanooga, TN 37416

<https://tagmfg.us>



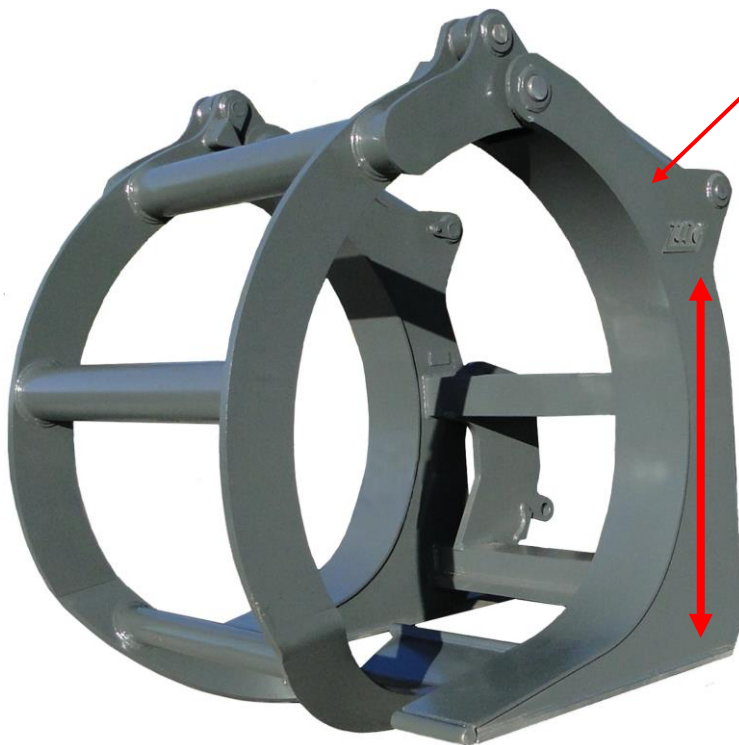
Wheel Loader Attachments

Heavy-Duty Mill Yard Forks



(3) Large Solid Monolithic ASTM A514 " T-1 " Full Height Weldments Offers Much Greater Strength and Rigidity Than Competitive Designs
Requires 3rd Function Hydraulics
Pin-on, or Quick-Coupler

IMPROVED NEW DESIGN



Heavy-Duty Sorting Grapple

(2) Large Solid Monolithic ASTM A514 " T-1 " Full Height Weldments Offers Much Greater Strength and Rigidity Than Competitive Designs
Requires 3rd Function Hydraulics
Pin-on, or Quick-Coupler



TAG Manufacturing, Inc. • Chattanooga, TN 37416

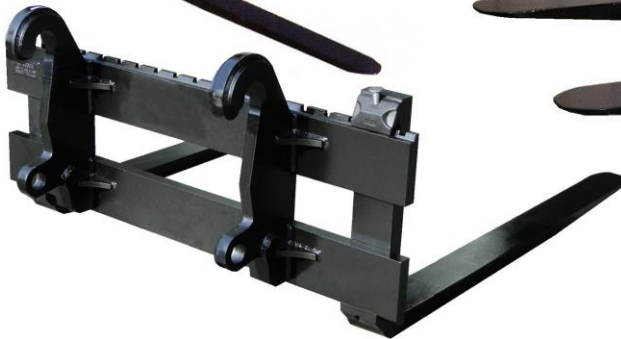
<https://tagmfg.us>



Wheel Loader Attachments



Class 2 Rated @ 6,400 lbs.



Class 3 Rated @ 10,500 lbs.

Class 4 Rated @ 14,000 lbs.

Medium Duty " Pallet Style Forks "

Pin-on • Quick-Coupler, " ITA " Top Carriage
Compact to Medium Sized Wheel Loaders • RTL Backhoes



Weld-on " Quick-Attach " Bucket Forks

5000 lbs. to 20,000 lbs. Ratings
For Small to Medium Wheel Loaders
and RTL Backhoes



Severe-Duty Quarry Forks For Large Wheel Loaders

Designed to Pry and Chisel Out Cut
or Blasted Dimensional Stone
Loading and Unloading of Trailers



Dedicated " Swing-Over " Rubber Tire Loader Bucket Forks Rear Lockable in " Storage Mode "

For G.P. and Multi-Purpose 4-N-1 Buckets
• ***Designed for TAG Buckets Only***

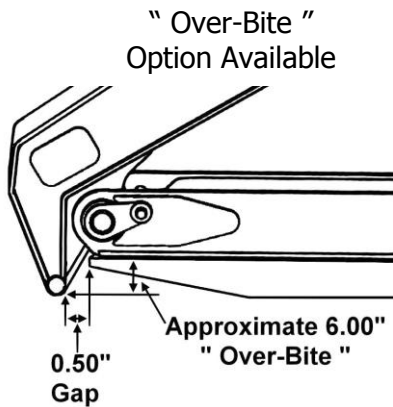


TAG Manufacturing, Inc. • Chattanooga, TN 37416

<https://tagmfg.us>



Wheel Loader Attachments



Heavy-Duty Oil and Gas Drilling Pipeline and Utilities Construction Pipe Forks

Full Width Top Clamp with Stabilizer Clamps for Securely Handling
Very Long Pieces of Pipe, Double Hinge Top Clamp Folds to Hold More Pipe
Requires Only 3rd Function Hydraulics • Pin-on, or Quick-Coupler

Load Rated Forged Hooks



Heavy-Duty Manual Extendable Booms

Pin-on • Quick-Coupler
(1),(2), or (3) Stages As Class Ratings Require

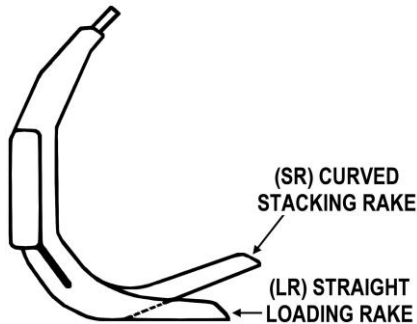


TAG Manufacturing, Inc. • Chattanooga, TN 37416

<https://tagmfg.us>



Wheel Loader Attachments



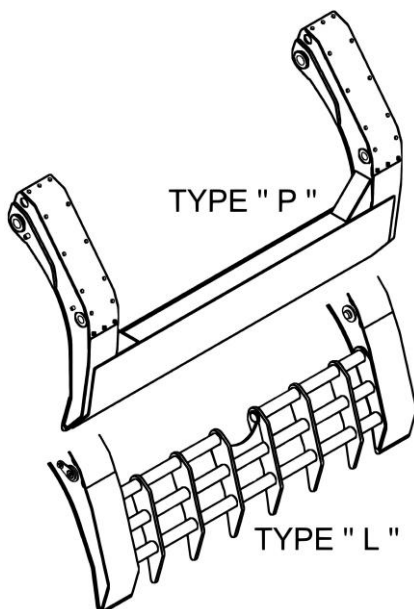
Heavy-Duty Standard Rakes, and Stacking Rakes

Pin-on • Quick-Coupler • ASTM A514 " T-1 " Construction

" Pipeline / Skidder-Tire Specials "

**Available With Wider Rake Carriages and Height Adjusted
Hook-Ups For Larger Diameter Skidder Tires**

Both Designs Available for Compact Wheel Loaders • RTL Backhoes



Heavy-Duty Grapple Rakes with (2) Independent Top Clamps or Optional " P " or " L " Top Clamp

Pin-on • Quick-Coupler • Requires 3rd Function Hydraulics



TAG Manufacturing, Inc. • Chattanooga, TN 37416

<https://tagmfg.us>



Wheel Loader Attachments

Bio-MassRake™



Severe-Duty Bio-Mass Rake with Wide (2) Independent Top Clamps

Pin-on, or Quick-Coupler
Special Top Clamp Design With
Enclosed Clamp and Rake Sections
for MAX Material Retention
Requires 3rd Function Hydraulics



Designed to " Push-Up " the Pile



TAG Manufacturing, Inc. • Chattanooga, TN 37416

<https://tagmfg.us>



WE'RE IT.

At TAG Manufacturing, Inc. We Strive to Offer You the Most Performance and Engineering Features Available in the Market Today in All Our Products

Coupled with the Highest Quality Materials and Components Obtainable and with World Class Innovative Manufacturing Processes that are Held to Rigid Quality Standards That Delivers Superior Performance and Durability In All of Our Products



Exclusive Limited One (1) Year Warranty

TAG Manufacturing, Inc. warrants its new product(s) to be free from defects and workmanship for a period of one (1) year from the date of original purchase

Disclaimer: subject to the terms and conditions of our published " Limited Warranty and Procedures " contained within our Price Book

Contact Your Local Dealer



TAG Manufacturing, Inc.
6989 Discovery Drive • Chattanooga, TN 37416
<https://tagmfg.us>

