

## RUBBER TIRE BACK HOE

RUBBER TIRE	Bucket Size				
	12"	18"	24"	30"	36"
310L	TK225	TK225	TK225	TK225	TK225
310SL/410L	TK225	TK225	TK225	TK225	TK225



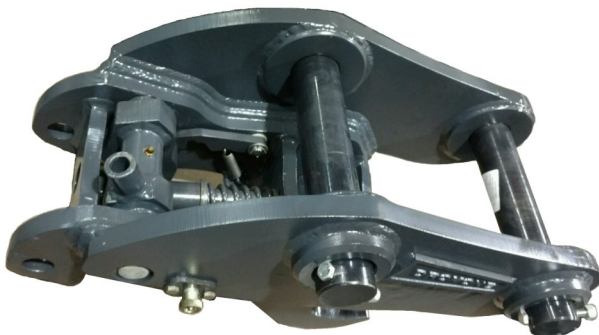
RUBBER TIRE	Pin Grabbing Coupler	
	Mechanical	Multi-Lock Hydraulic
310L		ML50-1
310SL/410L		ML50-2
710G/J/K	MC75	
<i>*WORKS WITH PIN ON BUCKETS ONLY*</i>		



### *MULTI-LOCK HYDRAULIC*

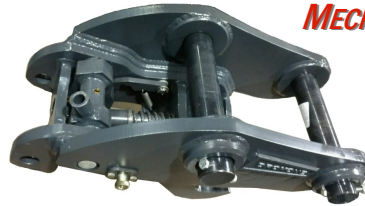


### *MECHANICAL*



## MINI EXCAVATOR

MINI EXCAVATOR	Bucket Size							
	10"	12"	18"	24"	30"	36"	42"	48"
17G Wedge	X156	X156	X156	X156				
26G Wedge		X156	X156	X156	DITCH	X156 TK225 DITCH		
35G Wedge		X156	X156	X156	DITCH	X156 TK225 DITCH		
50G Wedge		TK225	TK225	TK225	TK225	TK225 DITCH	DITCH	DITCH
60G Wedge		TK225	TK225	TK225	TK225	TK225 DITCH	DITCH	DITCH



**MECHANICAL**

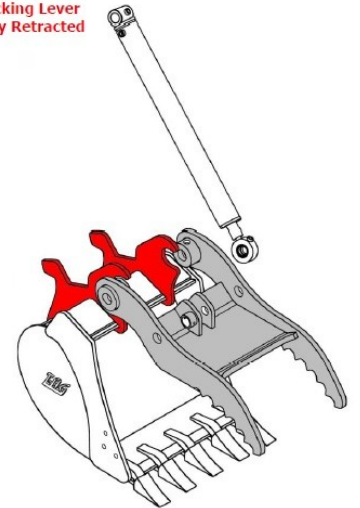


MINI EXCAVATOR	Pin Grabbing Coupler	
	Mechanical	Multi-Lock Hydraulic
26G	MC05-8	ML05
35G	MC05-8	ML05
50G	MC25-7	ML25
60G	MC25-8	ML45

*\*WORKS WITH PIN ON BUCKETS ONLY\**



**MULTI-LOCK HYDRAULIC**



MINI EXCAVATOR	Main Pin Hyd Thumbs w. Deere Wedge Lock or TAG QC27 Couplers, TAG Buckets & Hose Kits			
	Thumb Part#	Hose Kit Part#	Meshing Bucket Size	Bucket Part#
17G	213-0012A	Std 808-0009	18", 36"	Wedge: 1804WL2, 3604WL2 TAG QC: 1826Q2, 3626Q2
26G	213-0013A	Std 808-0000	18", 24", 36"	Wedge: 1805WL2, 2405WL2, 3605WL2 TAG QC: 1827Q2, 2427Q2S, 3627Q2
35G	213-0014A	Combo 808-0029	18", 24", 36"	Wedge: 1805WL2, 2405WL2, 3605WL2 TAG QC: 1827Q2, 2427Q2S, 3627Q2
50G	214-0585A	Combo 808-0029	24", 36"	Wedge: 2424WL2, 3624WL2 TAG QC: 2428Q2S, 3628Q2
60G	214-0585A	Combo 808-0030	24", 36"	Wedge: 2444WL2, 3644WL2 TAG QC: 2429Q2S, 3629Q2

*\*THUMBS MESH WITH 4 TOOTH 18" & 24" BUCKETS AND 6 TOOTH 36" BUCKETS\**



## EXCAVATOR

EXCAVATOR	Bucket Size									
	12"	18"	24"	30"	36"	42"	48"	54"	60"	72"
85G	TK225	TK225	TK225	TK225	TK225		DITCH			
135G		TK300 U30S	TK300 U30S	TK300 U30S	TK300 U30S	TK300 U30S	TK300 U30S			
160G			TK300 U30S		TK300 U30S	TK300 U30S	TK300 U30S		DITCH	
210G			TK350 U35S	TK350 U35S	TK350 U35S	TK350 U35S	TK350 U35S	U35S	DITCH	
250G			U35S	TK350 U35S	TK350 U35S	TK350 U35S	TK350 U35S	TK350 U35S	U35S	
350G				TK450 U45S	TK450 U45S	U45S	TK450 U45S	TK450 U45S	TK450 U45S	
350G HI CAP									TK450 U45S	
470G						TK550 U45S	TK550	TK550 U45S	TK550 U45S	TK550 U45S
470G HI CAP									TK550	TK550 U45S



EXCAVATOR	Main Pin Hydraulic Thumbs - Coupler, TAG Bucket	
	Thumb Part#	Meshing Bucket Size - Part#
85G	214-0549A	24" - 2449X2
135G	214-0550A	36" - 36120X2
160G	214-0552A	36" - 36150X2
210G	214-0200A	42" - 42200X2
250G	214-0553A	48" - 48230X2
350G	214-0554A	54" - 54330X2

**\*COMPATIBLE W. ALL DROMONE COUPLERS, JRB SMART LOCK AND POWERLATCH\***

EXCAVATOR	Main Pin Hydraulic Thumbs - No Coupler, TAG Bucket	
	Thumb Part#	Meshing Bucket Size - Part#
85G	213-0282A	24" - 2449X2
135G	213-0002A	36" - 36120X2
160G	213-0040A	36" - 36150X2
210G	213-0000A	42" - 42200X2
250G	213-0004A	48" - 48230X2
350G	213-0028A	54" - 54330X2

EXCAVATOR	Pin Grabbing Couplers		
	Mechanical	Auto-Lock Hydraulic	Multi-Lock Hydraulic
85G	MC50-1		ML50
135G	MC120	HC120	ML120
160G	MC160	HC160	ML160
210G	MC200	HC200	ML200
250G		HC230	ML230
300G			ML300
350G		HC330	ML330
470G		HC450	ML450
650D		HC650	
850D		HC850	

**\*WORKS WITH PIN ON BUCKETS ONLY\***



## WHEEL LOADER

Hydraulic Quick Couplers			
Hyd Kit	Machine	Style	Part #
Yes	310K/L	JRB E	100-0033H
Yes	444K-Z Bar	JRB 416	100-0219H
		Hi-Vis	100-0307H
Yes	524K-Z Bar	JRB 416	100-0046H
		Hi-Vis	100-0322H
Yes	544K-Z Bar	JRB 416	100-0044H
		Hi-Vis	100-0220H
Yes	624K-Z Bar	JRB 416	100-0060H
		Hi-Vis	100-0257H
Yes	644K/724K-Z Bar	JRB 418	100-0025H
		Hi-Vis	100-0117H
Yes	744K-Z Bar	JRB 420	100-0100H

**\*ALL COUPLERS WILL WORK WITH FACTORY PLUMBING\***



Quick Coupler General Purpose Buckets			
Cap. (CU YD)	Width	BOE & Pads	Style
3.00	100"	Yes	JRB 416
			Hi-Vis
3.50	106"	Yes	JRB 416
			Hi-Vis
4.25	120"	Yes	JRB 418
			Hi-Vis



Pin On General Purpose Buckets				
Cap. (CU YD)	Width	BOE & Pads	Style	Machine
3.00	100"	Yes	PIN-ON	544-Z Bar
3.50	106"	Yes	PIN-ON	544-Z Bar
3.75	106"	Yes	PIN-ON	624-Z Bar

Construction Forks			
Width	Tines	Style	Part #
60"	48"-96"	JRB 416	107-0287Q
60"	48"-96"	HI-VIS	107-0344Q
96"	48"-96"	JRB 416	107-0274Q
96"	48"-96"	HI-VIS	107-0346Q
106"	60"-96"	JRB 418	107-0031Q

Tine Lengths	
Length	Part #
48"	600-0031
60"	600-0000
72"	600-0005
96"	600-0023



Load Rated Forged Hooks



Extendable Booms			
Min	Max	Style	Part #
7' 3"	13' 6"	HI-VIS	114-0000Q
7' 3"	13' 6"	JRB 416	114-0001Q

