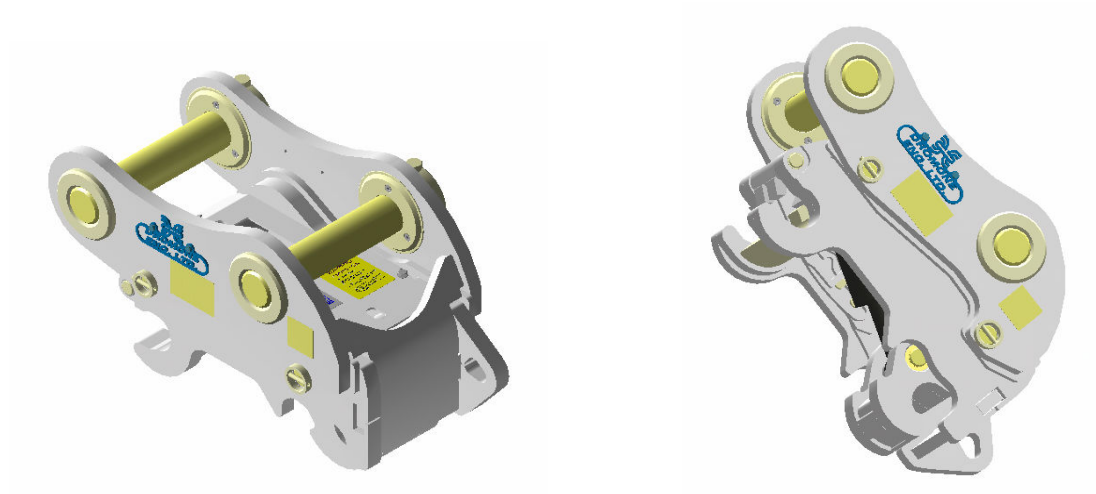


DROMONE ENGINEERING LTD.



**EXCAVATOR AUTOMATIC QUICK HITCH.
VISUAL PROP-LOCK TYPE.**

OWNERS MANUAL.

Index.

Item.	Description.	Page.
1.	Introduction.	1
2.	Important Safety Notes.	2 - 3
3.	Installation Instructions.	
3.1	Visual Prop Lock Quick Hitch.	4 - 16
4.	Operating Instructions.	
4.1	Visual Prop Lock Quick Hitch.	17 - 24
5.	Maintenance Instructions.	25
6.	Parts List.	26
7.	Spare Parts Drawing.	27
8.	Hydraulic and Electric Schematic.	28
7.	Product Register.	29
8.	Customer Acceptance	30

Introduction.

Thank you for purchasing the Dromone 'VISUAL PROP-LOCK QUICK HITCH'. This hitch has been designed and manufactured with ease of use and operator safety in mind.

This product has undergone extensive testing and benchmarking against similar competitor products and we believe the Dromone 'VISUAL PROP-LOCK QUICK HITCH' product, to be the best available in today's market place.

The 'VISUAL PROP-LOCK QUICK HITCH' is characterised by the manner in which the mechanical linkage can be specially manoeuvred to enable latching to buckets and other implements while under normal working conditions it operates a permanent latch which prevents escape of the front pin from the quick hitch fixed jaw.

The 'VISUAL PROP-LOCK QUICK HITCH' is fitted with a movable back hook which is controlled by the action a hydraulic cylinder.

This front jaw of the hitch is fitted with a failsafe locking latch to prevent release of the bucket pin, the linkage which operates the locking latch is arranged so that the mechanism will remain in the safety position in the event of a failure in the hydraulic system or cylinder.

The 'PROP-LOCK' can be easily seen from the cab to verify proper engagement.

This hitch is capable of being fully operated from the comfort and safety of the machine cab.

This 'VISUAL PROP-LOCK Quick Hitch' product, when used correctly and with proper OEM (Original Equipment Manufacturer) excavator buckets and attachments will provide a safe and reliable means of quick attachment and changeover of various implements, thus allowing the user to get maximum productivity from the machine.

To guarantee satisfactory and safe operation of the equipment, we insist that only experienced and qualified personnel install and operate the product.

Dromone Engineering LTD, will accept no responsibility or liability for equipment installed or operated unless it is full accordance with the information provided in this manual.

Important Safety Notes.

Please Read Carefully.

1. As a new owner / operator of a Dromone 'VISUAL PROP-LOCK Quick Hitch' it is very important that you take time to acquaint yourself with the main features of the hitch and the requirements for its safe installation, operation and maintenance.

Therefore, we recommend that you study the contents of this booklet very carefully and be fully familiar with its contents before commencing work.

2. Great care must be taken when working on or with the 'VISUAL PROP-LOCK Quick Hitch'. Never attempt to work on, or carry out maintenance to this product without first ensuring that it has been made safe, and that the machine to which it is attached is switched off.
3. In the case of a hydraulically operated hitch. Even with the machine switched off the hydraulic circuits may remain pressurised so care must be taken when connecting / disconnecting hydraulic hoses.
4. While the 'VISUAL PROP-LOCK Quick Hitch' is designed and proven to work with most available buckets and other attachments, it is recommended that for prolonged use with a rock hammer, the 'VISUAL PROP-LOCK Quick Hitch' should be detached and the rock hammer connected directly to the machine.
5. Regardless of the bucket or attachment being used with the 'VISUAL PROP-LOCK Quick Hitch' they must be used in strict accordance with their individual manufacturers guide lines and instructions.
6. In order to ensure that you get the most from your 'VISUAL PROP-LOCK Quick Hitch' product we have set out in this booklet some recommended service and maintenance checks. These should be carried out on a regular basis and any damaged parts should be replaced immediately.
7. The Dromone 'VISUAL PROP-LOCK Quick Hitch' hydraulic cylinder, is fitted with a check valve which will prevent a pressure drop even in the event of a hydraulic system failure. This is a safety device to prevent the 'Quick Hitch' opening accidentally if the hoses or cylinder were to be damaged. This safety device is independent of the failsafe latching mechanism.

Important Safety Notes.

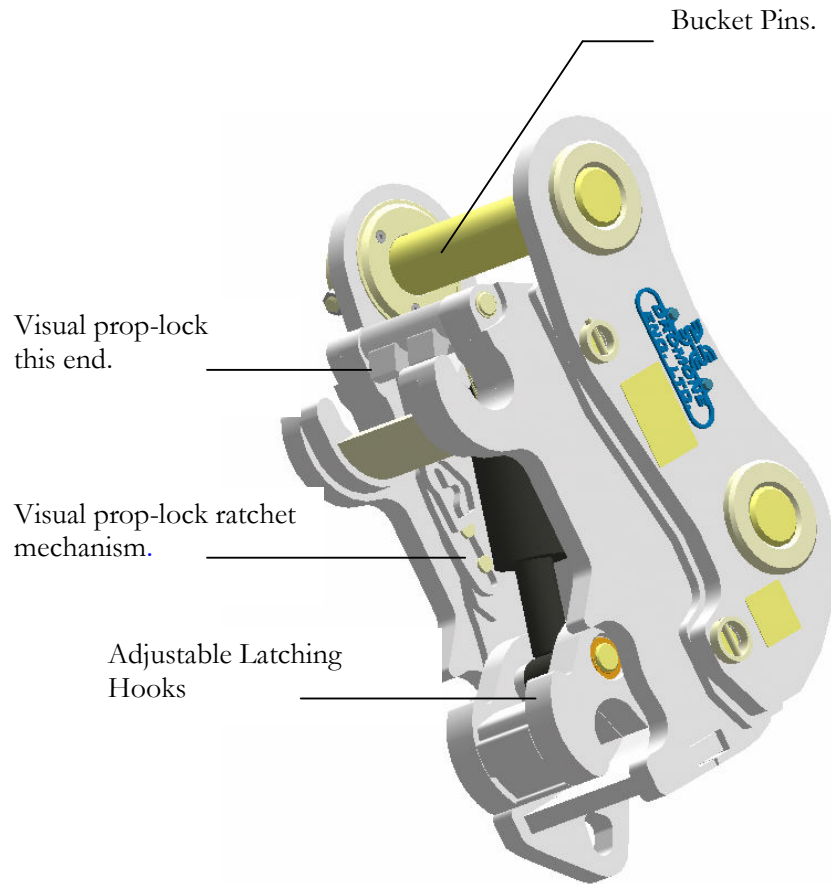
Please Read Carefully.

8. Never attempt to modify either the Dromone 'VISUAL PROP-LOCK Quick Hitch' or the machinery onto which it is intended to be attached without first receiving approval from Dromone Engineering personnel. Unauthorised modification of the 'VISUAL PROP-LOCK Quick Hitch' or the host machine can seriously impair the performance of the equipment and could cause serious injury to personnel involved in working with or in close proximity to the machinery.
9. All persons involved in the installation, maintenance and operation of the Dromone 'VISUAL PROP-LOCK Quick Hitch' must ensure that they take full responsibility for their own personal safety by wearing suitable protective clothing, safety shoes and eye glasses where appropriate.
10. If you should have any difficulty with your Dromone 'VISUAL PROP-LOCK Quick Hitch' which is not addressed in this manual, then you should contact Dromone Engineering immediately, at the numbers provided on the back page of this manual.

Installation Instructions.

VISUAL PROP-LOCK

Quick hitch.



Installation of the Dromone 'VISUAL PROP-LOCK Quick Hitch'.

To guarantee satisfactory and safe operation of the equipment, it is strongly recommended that the 'VISUAL PROP-LOCK Quick Hitch' be installed and fitted by trained personnel only.

Installation of the 'VISUAL PROP-LOCK Quick Hitch' must be in accordance with the instructions provided in this manual, any deviation from the instructions given here needs to be authorised by Dromone Engineering personnel.

Any difficulty with interpretation of the installation instructions in this manual should be resolved between the fitter and Dromone Engineering, before proceeding any further - **IF IN DOUBT ASK.**

Procedure:

1. Carry out a visual inspection of the 'VISUAL PROP-LOCK Quick Hitch' and its accessories. Check the packaging for any damage, which might have occurred in transit. Check that all items have been delivered. If you encounter anything, which appears to be damaged, missing or incorrect, then contact Dromone Engineering before you proceed any further.

Accessories Kit Includes.

2 Long hoses.
2 Short hoses with wire guard.
2 Short hoses plain.
2 Double hose clamps.
2 Single hose clamps.
1 Control box.
1 Solenoid valve.
Tie wraps.
Selection of hose fittings. While we have made every effort to supply the needed fittings. Certain machines will require non supplied fitting types.



2. If you have NOT done so already, **READ THIS MANUAL** in full before proceeding. Failure to read and understand the full contents of this manual may result in improper Installation, Operation or Maintenance of the of the 'VISUAL PROP-LOCK Quick Hitch' which in turn could lead to serious injury or death of equipment operators.

IMPORTANT. NOTE:

DO NOT PROCEED WITH THE INSTALLATION, OPERATION OR MAINTENANCE OF THE DROMONE 'VISUAL PROP-LOCK QUICK HITCH' UNTIL YOU HAVE READ AND UNDERSTAND THE PRODUCT MANUAL IN FULL.

TO DO SO COULD LEAD TO SERIOUS INJURY OR DEATH OF THE PERSONNEL INVOLVED.

DROMONE ENGINEERING LTD.



EXCAVATOR AUTOMATIC QUICK HITCH.
VISUAL PROP-LOCK TYPE.

OWNERS MANUAL.

3. The installation of the 'VISUAL PROP-LOCK Quick Hitch' is a job for at least two people, one of which should be a suitably qualified fitter.
4. Tools required for the installation of the 'Quick Hitch'.
 - a. Lifting gear (suitably sized hoist, chains and straps) to manoeuvre the hitch from its packaging to the site prepared for installing it on the host machine.
 - b. Fitter's toolkit.
 - c. Grinder (Only to be used in the preparation of weld sites).
 - d. Portable welding plant.
 - e. Touch up paint to suit the machine onto which the hitch will be fitted.
5. Before commencing with the installation of the 'VISUAL PROP-LOCK Quick Hitch' you must remove the existing attachment (bucket etc) from the machine to which the 'VISUAL PROP-LOCK Quick Hitch' will be fitted. Also, remove the OEM pins holding the bucket to the machine and set them aside for later use.

These will be used to attach the 'VISUAL PROP-LOCK Quick Hitch' to the machine at step 9. You must also ensure that the joint area of the machine arm and the bucket are thoroughly cleaned.

6. Remove the bucket pins, which have been installed in the 'VISUAL PROP-LOCK Quick Hitch' prior to delivery. These pins are for use on the bucket or implement to which the 'VISUAL PROP-LOCK Quick hitch' will be attached. They can be installed in the bucket or implement later.
7. Remove the 'O' ring seals from the existing attachment. Check them to ensure they are in good condition (replace if necessary), clean them and temporarily place them over the 'VISUAL PROP-LOCK Quick Hitch' bushings as illustrated.

(Refer to fig 1).

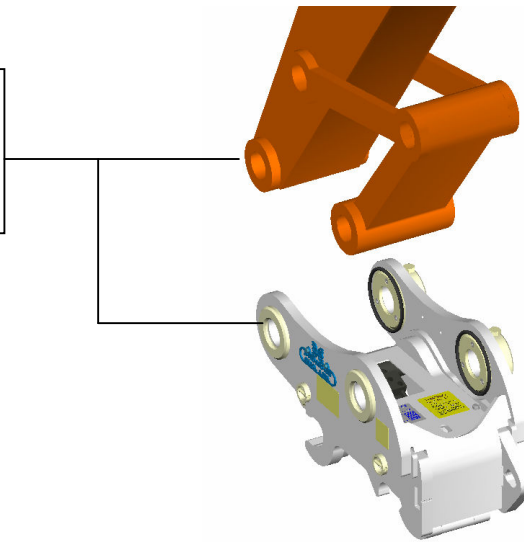
Fig 1. 'O' ring in temporary position over bushing.



8. Place the 'VISUAL PROP-LOCK Quick Hitch' on the ground with the fixed pin positions facing upwards. Move the machine arm over the 'VISUAL PROP-LOCK Quick Hitch' and lower it into position, aligning the holes in the machine arm and links with those of the 'Quick Hitch'.

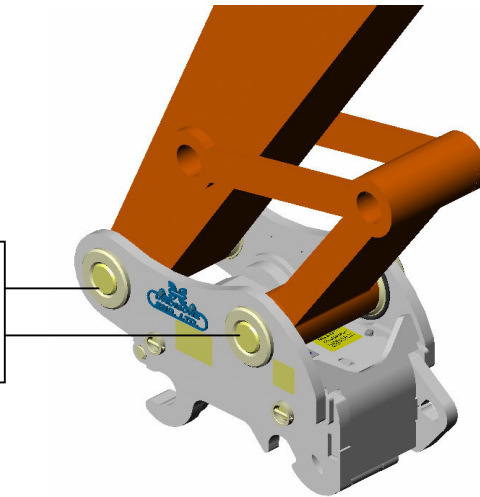
(Refer to fig 2).

Fig 2a. Illustrates how to line up the pin positions of the dipper arm and the VISUAL PROP-LOCK Quick Hitch.



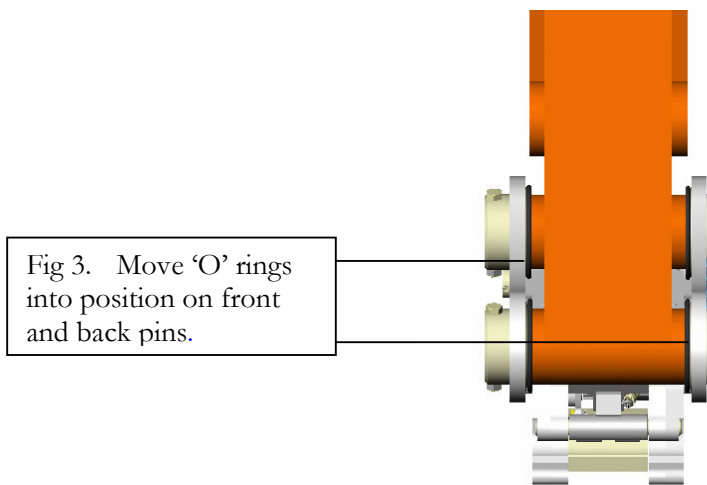
Install the OEM pins previously removed at stage 5. Grease the pins and bushings and secure the pins in place with the bolts and lock nuts removed earlier.

Fig 2b. OEM pins installed, greased and secured with nuts and bolts on far side.



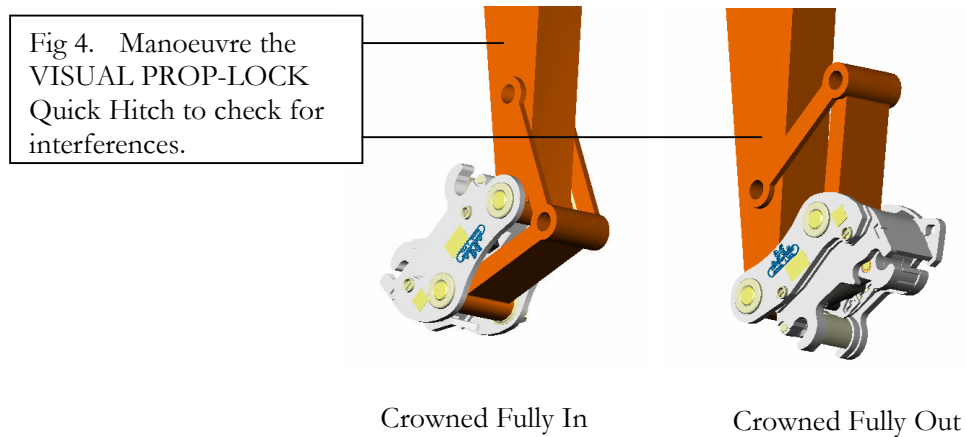
Move the 'O' rings referenced earlier in point 7 to positions between the machine bushings and the 'VISUAL PROP-LOCK Quick Hitch' bushings. Check that they are fitting correctly.

(Refer to fig 3).



9. Safety check. Check that the 'VISUAL PROP-LOCK Quick Hitch' is fitting correctly by manoeuvring it with the machine and at the same time watching for any interference or resistance to movement that may exist. If there is any sign of problems with the smooth functioning of the 'Quick Hitch' DO NOT attempt to carry out any modifications to it, or the host machine. Instead contact Dromone Engineering who will advise as necessary.

(Refer to fig 4).



10. Connecting to the **HYDRAULIC SYSTEM**.

Extend the machine arm to its full length and position it as low to the ground as possible while extending the bucket cylinder. The 'VISUAL PROP-LOCK Quick Hitch' should be set level with the ground.

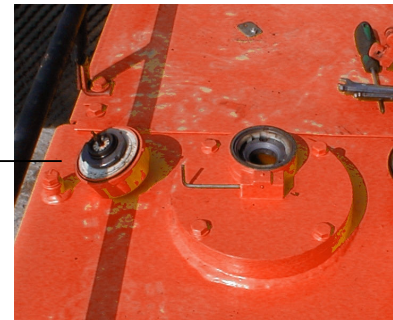
WARNING. BEFORE ATTEMPTING ANY OF THE FOLLOWING STEPS THE MACHINES HYDRAULIC SYSTEM MUST BE DE-PRESSURISED.

The machines hydraulic system operates under very high pressure. Failure to take precautions could result in serious injury. Consult the machine manual for instructions to relieve the pressure in the hydraulic tank.

With the tank depressurised remove the cap from the hydraulic tank and set aside until later.

(Refer to fig 5).

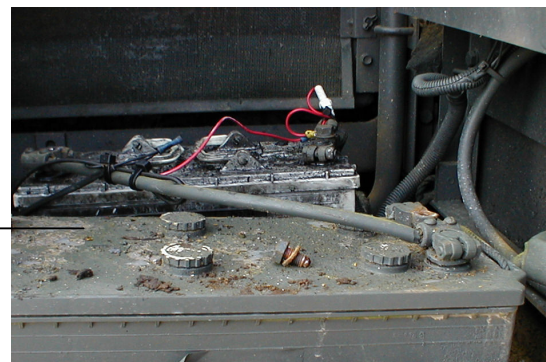
Fig 5. Tank depressurised and cap removed



11. **WARNING. THE NEGATIVE LEAD FROM THE MACHINES BATTERY MUST BE DISCONNECTED BEFORE ANY WELDING TAKES PLACE. FAILURE TO DO SO MAY CAUSE SERIOUS DAMAGE TO THE MACHINES ON BOARD COMPUTER SYSTEM.**

(Refer to fig 6).

Fig 6. Disconnect the battery to prevent serious damage to the machines computer system.



- 12 Fit the two short hydraulic hoses with wire mesh guards attached, one hose to each of the Quick Hitch cylinder ports A and B. If the cylinder ports are not clearly identified, use the figure below to distinguish them and make a mark beside each port to identify A and B for future reference.

(Refer to fig 7).

Fig 7a. Hydraulic Cylinder with PORT 'A' highlighted.

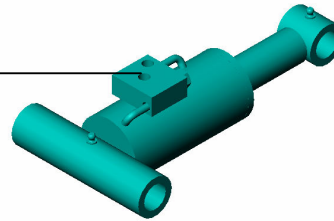


Fig 7b. Hydraulic cylinder as arranged in the 'VISUAL PRO-LOCK Quick Hitch'.

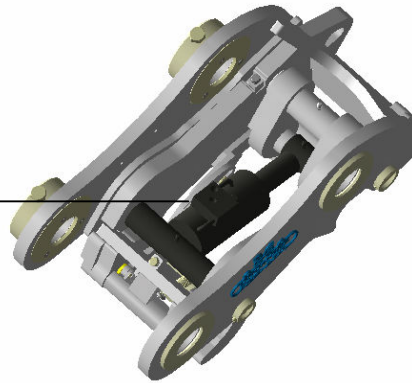


Fig 7c. Short hoses with wire guards attached, fixed to Quick Hitch cylinder ports.



- 13 Attach the two single hose clamps to the machine dipper arm. To position the clamps measure a distance of 10 inches from the centre of the front pin on the Quick Hitch. Using the clamp bases as a template, mark the area where the clamps will be fitted. Remove paint from the area where, weld will be applied to mount the clamps in place. Weld the clamp bases to the machine arm as shown.

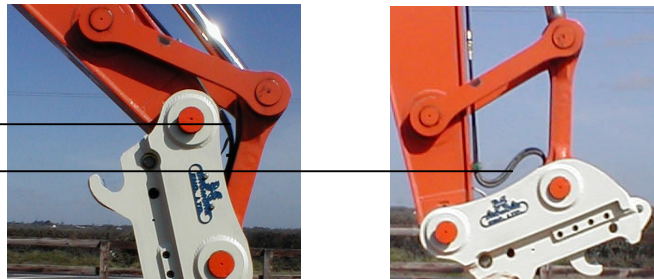
CAUTION: Weld to be applied parallel to the length of the machine arm. Welding across the arm could cause it to weaken. When clamping the hoses leave enough slack to allow the bucket to crown fully in towards the machine.

(Refer to fig 8).

Fig 8a. Weld along edges parallel to length of the arm.



Fig 8b. Leave enough slack to allow the bucket to curl fully without straining the hoses.



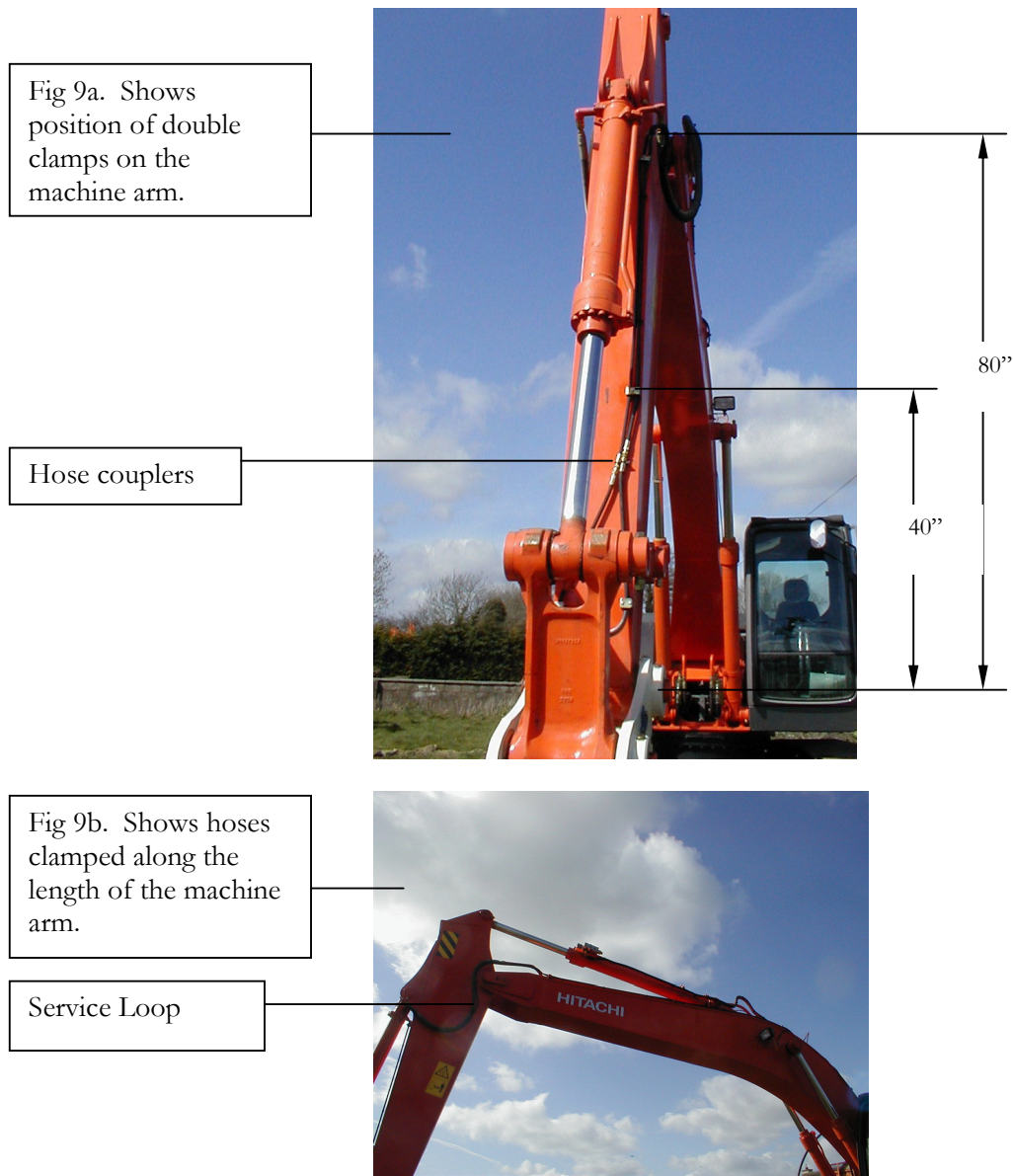
- 14 Attach the two double hose clamps to one edge of the machine dipper arm. To position the clamps measure a distance of 40 inches and 80 inches approx from the centre of the front pin on the 'VISUAL PROP-LOCK Quick Hitch'. Using the clamp bases as a template, mark the area where the clamps will be fitted. Remove paint from the area where, weld will be applied to mount the clamps in place. Weld the clamp bases to the machine arm as shown.

CAUTION: Weld to be applied parallel to the length of the machine arm. Welding across the arm could cause it to weaken.

Attach one end of the long hoses to the cylinder hoses assembled at stage 12 using the couplers provided. Clamp the long hoses in place side by side using the double clamps now installed.

With the hoses clamped back to the knuckle joint, proceed to tie wrap the remaining length of hose to the machines hydraulic hose all the way to the end of the jib.

(Refer to fig 9).



- 15 Taking into account the length of hose tail left at the jib end, select a location to mount the solenoid valve where the hoses can reach it comfortably.

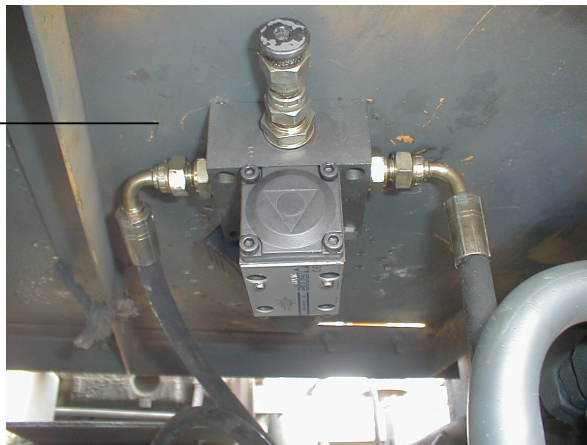
The solenoid valve is mounted by drilling two suitably sized mounting holes and securing it in place by means of two hex head bolts and nylon lock nuts.

NOTE: The outward appearance of the Solenoid valve will vary from one manufacturer to another but the instructions to follow will remain similar.

Once in place the hoses extending from ports A and B of the 'VISUAL PROP-LOCK Quick Hitch' cylinder should be connected to the A and B ports of the solenoid valve. The A and B ports on the valve are marked.

(Refer to fig 10).

Fig 10. Mounting of the solenoid valve under the engine cover.



- 16 Take the two remaining hoses and connect them as follows.

Connect one hose between the ports marked 'P' on the solenoid valve to port marked 'PT' on the machines hydraulic pump.

Connect the other hose to the port marked 'T' on the solenoid valve to a suitable outlet on the machines hydraulic tank. It may be necessary to 'TEE' into an existing feed from the tank.

- 17 The control box for operation of the hitch can now be installed in the machine cab. Select a suitable position for mounting the control box taking into account operator access and comfort. Mount the control box using appropriate hardware.

(Refer to fig 11).

Fig 11. Mount the control box in a convenient location to suit the machine operator.



- 18 The control box is supplied with a pre-assembled harness, which should be connected as follows.

Ensure that the control box rating matches that of the machines voltage (i.e. 12V DC or 24V DC).

The earth lead (GREEN and YELLOW) should be connected to a machine earth.

The black lead marked '1' should be connected to the positive terminal of the machine battery. This lead should be fitted with an 'in-line' fuse of maximum rating 6 amp.

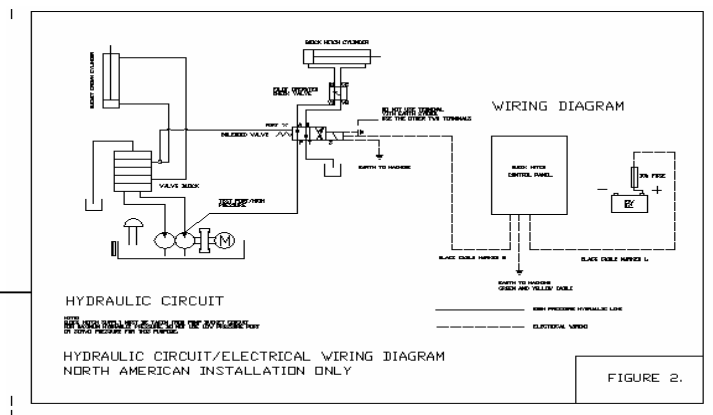
The remaining black lead marked '2' should be connected to terminal 2 on the solenoid valve.

Terminal 1 on the solenoid valve should be connected to a machine earth.

CAUTION: The solenoid valve has an earth terminal; this should NOT be used.

(Refer fig 12).

Fig 12. Hydraulic and Electrical schematic diagram. To be found at the end of this manual.



- 19 Installation of the Dromone 'VISUAL PROP-LOCK Quick Hitch' is now complete. As a final check, before reconnecting the machine battery and pressurising the hydraulic system you should re-trace your steps through the installation instructions to ensure that nothing has been omitted.
- 20 Using appropriate colour and paint type to match that of the machine the areas around all weld sites should be touched up.
- 21 Re-attach the machine battery ensuring proper connection to the negative and positive terminals.
- 22 Re-install the hydraulic tank cap and ensure it is fitted correctly, before pressurising the machines hydraulic system as per the machine manual.

Operating Instructions.

AUTO LATCH Quick Hitch

Bucket / Attachment 'Pick up'.

Before attaching to a bucket or any other attachment it is important to check for the following.

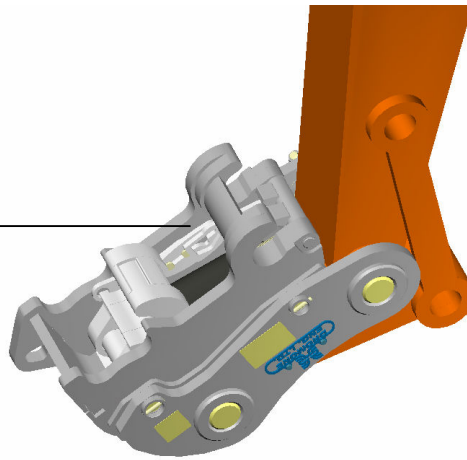
- a. The attachment is fitted with the correct pins at the correct centre distances and that they are secured properly in place.
- b. Ensure that the 'VISUAL PROP-LOCK Quick Hitch' has been left safe after previous use / operation.
- c. Ensure that the area within the maximum machine swing radius is clear of all personnel and obstacles.

Procedure:

1. From the operators seat in the machine cab the 'VISUAL PROP-LOCK Quick Hitch' must be fully crowned inwards in order to disengage the automatic latching system.

(Refer to fig 1).

Fig 1. Shows the hitch crowned fully inwards to disengage the latching system.



2. Set the switch on the in-cab control panel to the 'ON' position, the switch will illuminate RED and activate an audible buzzer (continuous tone) in the machine cab.

NOTE: If no further action is taken within 5 seconds the unit will automatically 'LOCK OUT', the indicator light will go out but the buzzer will maintain a continuous tone.

(Refer to fig 2a).

Fig 2a. Set the control switch to the on 'ON' position. Buzzer will sound and status indicator will illuminate red.



3. Press and hold the activation button within 5 seconds from switch on. The status indicator light will change from continuous to a flashing red signal and the buzzer will also change from a continuous tone to a pulsating tone. This indicates that a positive supply is being sent to the solenoid valve, which in turn operates the quick hitch cylinder and opens the latching hooks.

(Refer to fig 2b).

Fig 2b. Press and hold the activation button until Quick Hitch hooks have fully retracted.

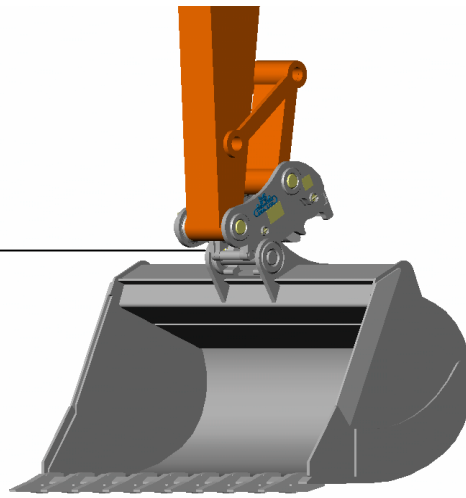
Status indicator light.



4. Manoeuvre the 'VISUAL PROP-LOCK Quick Hitch' to line it up with the bucket or implement to be picked up.

(Refer to fig 3)

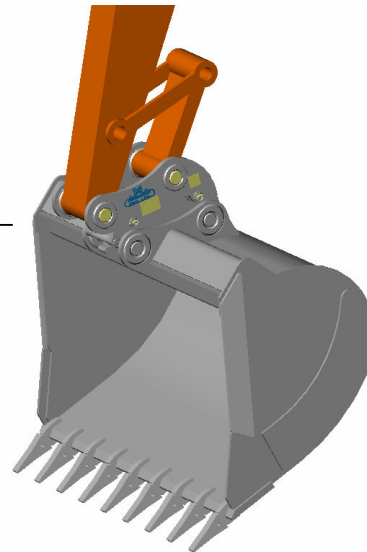
Fig 3. Line up the front fixed jaws of the 'VISUAL PROP-LOCK Quick Hitch' with the pins of the bucket to be picked up.



4. Lower the 'VISUAL PROP-LOCK Quick Hitch' downwards and slide forward to engage the front jaw of the 'VISUAL PROP-LOCK Quick Hitch' over the nearest bucket pin. Rotate the 'VISUAL PROP-LOCK Quick Hitch' clockwise to line up the second bucket pin (furthest from the machine) with the rear jaw of the quick hitch.

(Refer to fig 4).

Fig 4. Manoeuvre the 'VISUAL PROP-LOCK Quick Hitch' to cradle the front and back pins of the bucket in the Quick Hitch jaws.



5. The next stage is to set the switch to the 'OFF' position, the indicator light will go out and the audible buzzer will stop sounding in the machine cab. The 'Quick Hitch' cylinder will extend and lock the hitch latching hooks securely over the attachment pins. This manoeuvre will also activate the automatic latching system.(Refer to fig 5)

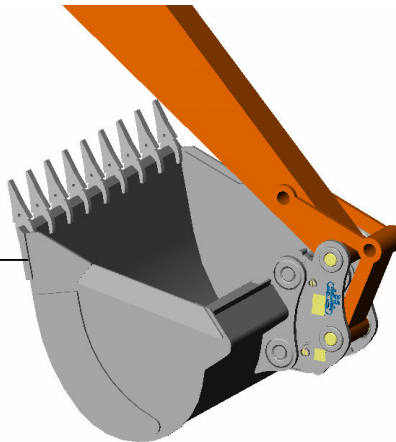
Fig 5. Set the control switch to the OFF position. The Quick Hitch jaws will close around the bucket pins and the auto latch will engage.



6. When both attachment pins are seated in the 'VISUAL PROP-LOCK Quick Hitch' jaws, rotate the attachment fully inwards using the excavator bucket cylinder. This manoeuvre will ensure that the attachment is fully seated in the 'VISUAL PROP-LOCK Quick Hitch' jaws.

(Refer to fig 6).

Fig 6. Curl the bucket inwards to ensure it is properly seated and the auto latching system is operational.



7. As a final check that this procedure has been carried out correctly, the 'VISUAL PROP-LOCK Quick Hitch' with the bucket or attachment coupled to it should be rotated fully outwards. A visual check should indicate that the bucket pin is being properly retained by the Auto Latch mechanism. If all is OK at this stage the 'VISUAL PROP-LOCK Quick Hitch' is ready for use

(Refer to fig 7).

Fig 7. Rotate bucket fully out to check it has been coupled correctly

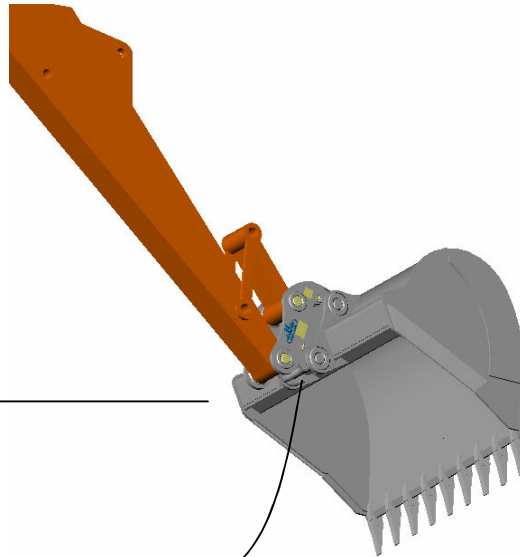
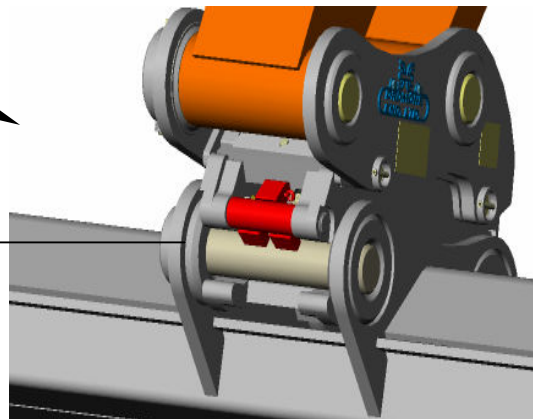


Fig 7a. VISUAL PROP-LOCK drops in front of the bucket pin to prevent it escaping.



Bucket / Attachment 'Release'.

Before attempting the release of a bucket or any other attachment it is important to check for the following.

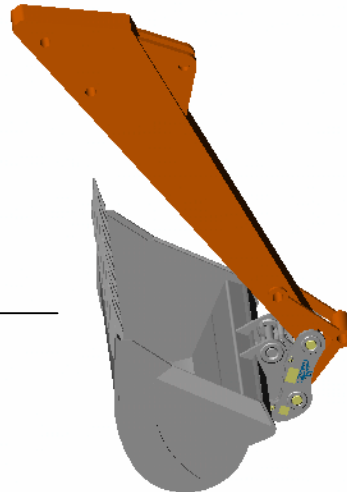
- a. The hydraulic ram in the hitch should be fully extended and the latching hooks closed tight around the attachment pins of the bucket or implement to be released.
- b. Ensure that the area within the maximum machine swing radius is clear of all personnel and obstacles.

Procedure:

1. Lower the 'Quick Hitch and attachment to the ground with the 'Quick Hitch' rotated fully inwards towards the machine in order to disengage the automatic latching system.

(Refer to fig 8).

Fig 8. Curl the bucket inwards and lower to the ground.



2. Set the switch on the in-cab control panel to the 'ON' position, the switch will illuminate RED and activate an audible buzzer (continuous tone) in the machine cab.

NOTE: If no further action is taken within 5 seconds the unit will automatically 'LOCK OUT', the indicator light will go out but the buzzer will maintain a continuous tone.

(Refer to fig 8a).

Fig 8a. Set the control switch to the on 'ON' position. Buzzer will sound and status indicator will illuminate red.



3. Press and hold the activation button within 5 seconds from switch on. The status indicator light will change from continuous to a flashing red signal and the buzzer will also change from a continuous tone to a pulsating tone. This indicates that a positive supply is being sent to the solenoid valve, which in turn operates the quick hitch cylinder and opens the latching hooks.

(Refer to fig 8b).

Fig 8b. Press and hold the activation button until Quick Hitch hooks have fully retracted.

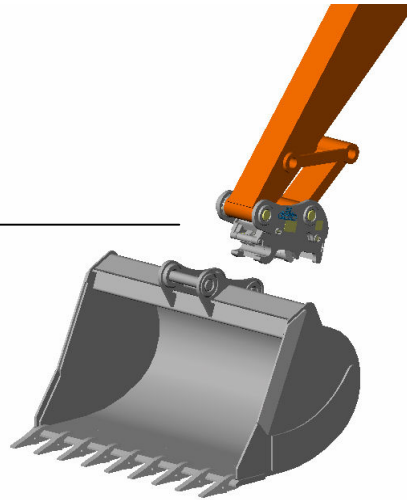
Status indicator light.



3. Manoeuvre the 'Quick Hitch' rearwards, away from the machine and this will disengage the 'Quick Hitch' from the bucket or other attachment.

(Refer to fig 9).

Fig 9. Move the Quick Hitch rearwards to dislodge the bucket.



4. The next stage is to set the switch to the 'OFF' position, the indicator light will go out and the audible buzzer will stop sounding in the machine cab. The 'Quick Hitch' cylinder will extend and lock the hitch latching hooks. This manoeuvre will also activate the automatic latching system.

(Refer to fig 10)

Fig 10. Set the control switch to the OFF position. The Quick Hitch jaws will and the auto latch will engage.



Maintenance & Service Checks.

Maintenance Checks.

The following checks should be carried out on a regular basis.

1. Check that the hitch components are not damaged or showing signs of wear.
2. Check the latching hooks for damage or undue wear.
3. Check the attachment pins for damage or undue wear.
4. Remove the cover plate and check for any sign of damage or clogging of the auto latch linkage mechanism and tensioning spring.
5. Remove the cover plate and check for oil leaks from the hydraulic cylinder and hose connections.
6. Check that all nuts and bolts used to secure pins are locked tight.

Service Instructions.

The following service instructions should be carried out on a regular basis.

1. Grease hitch at regular intervals **(daily or every 8 hours of operation)**. All pins and bushings should be greased. Grease nipples are provided at cylinder bushings and at latching hooks to facilitate access for this purpose.
2. Tighten all nuts and bolts used to secure pins.
3. Clean hitch of all dirt and debris. The hitch cover plate can be removed to access around the cylinder area. Ensure all labels are clean and legible.
4. Ensure all hose connections are tight.
5. Any damaged or badly worn parts should be replaced immediately.

Parts List.

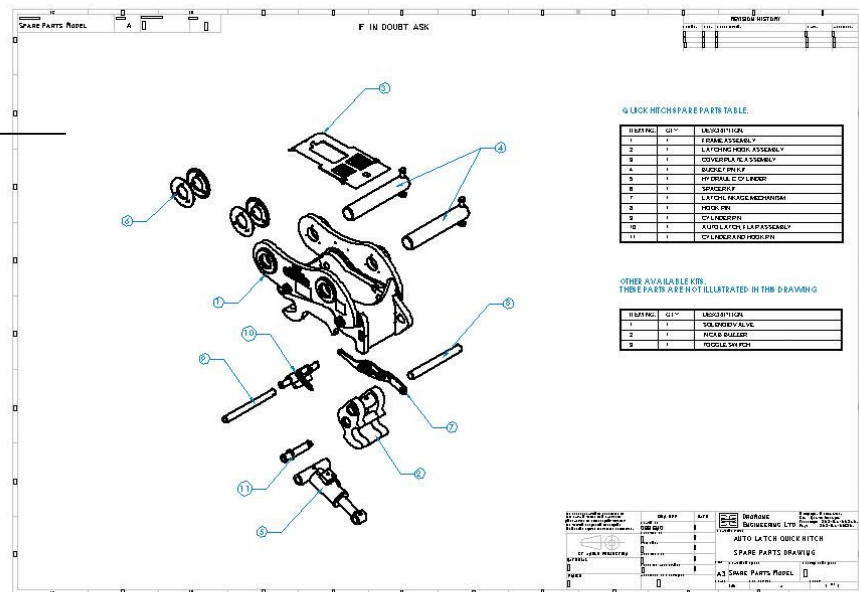
Ordering Spare Parts.

All Dromone Engineering 'VISUAL PROP-LOCK Quick Hitches' are labelled with a unique serial number.

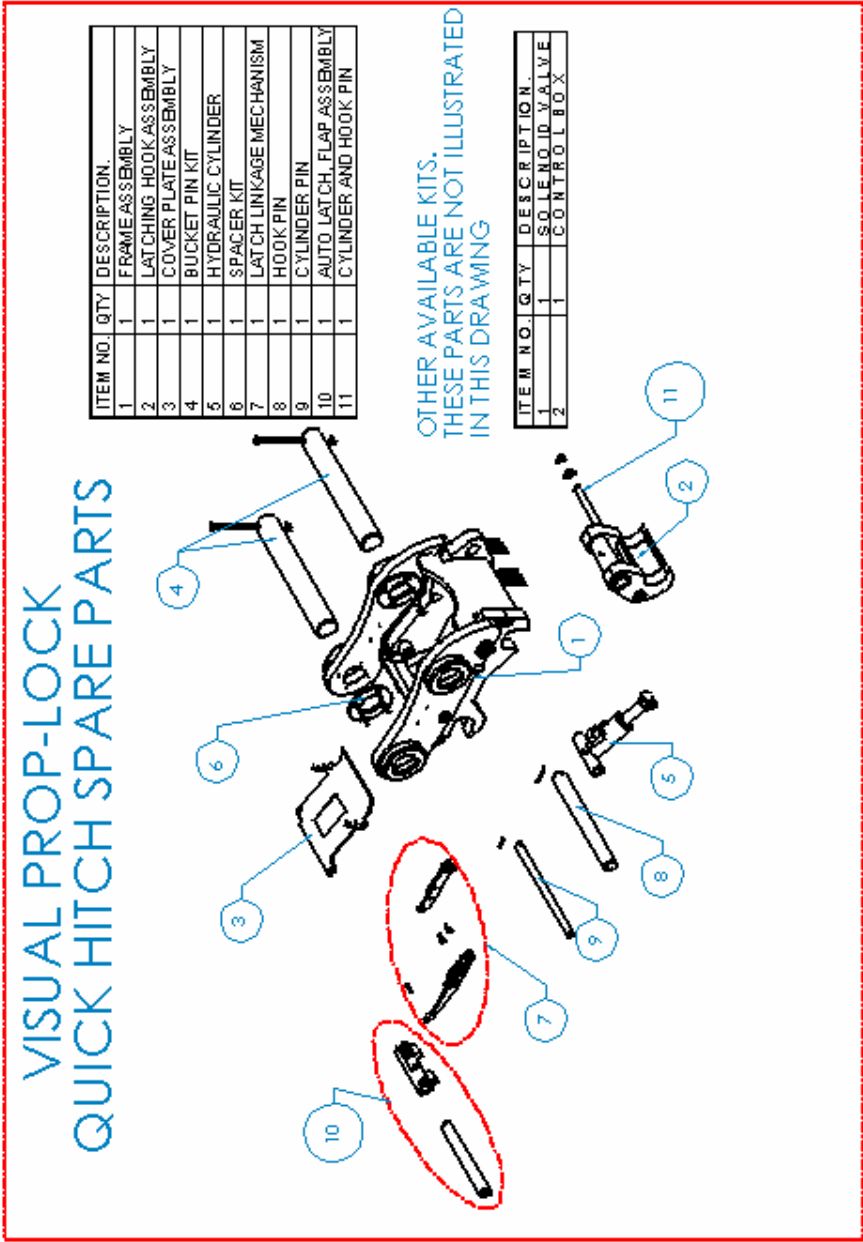
The serial number label is located on the cover plate of the hitch. Before ordering spare or replacement parts, you will need to note down the serial number of your hitch.

At the time of ordering spare or replacement parts, you will be required to provide the serial number and a description of the part(s) required. The parts description can be found by reference to the illustration drawing attached in this manual.

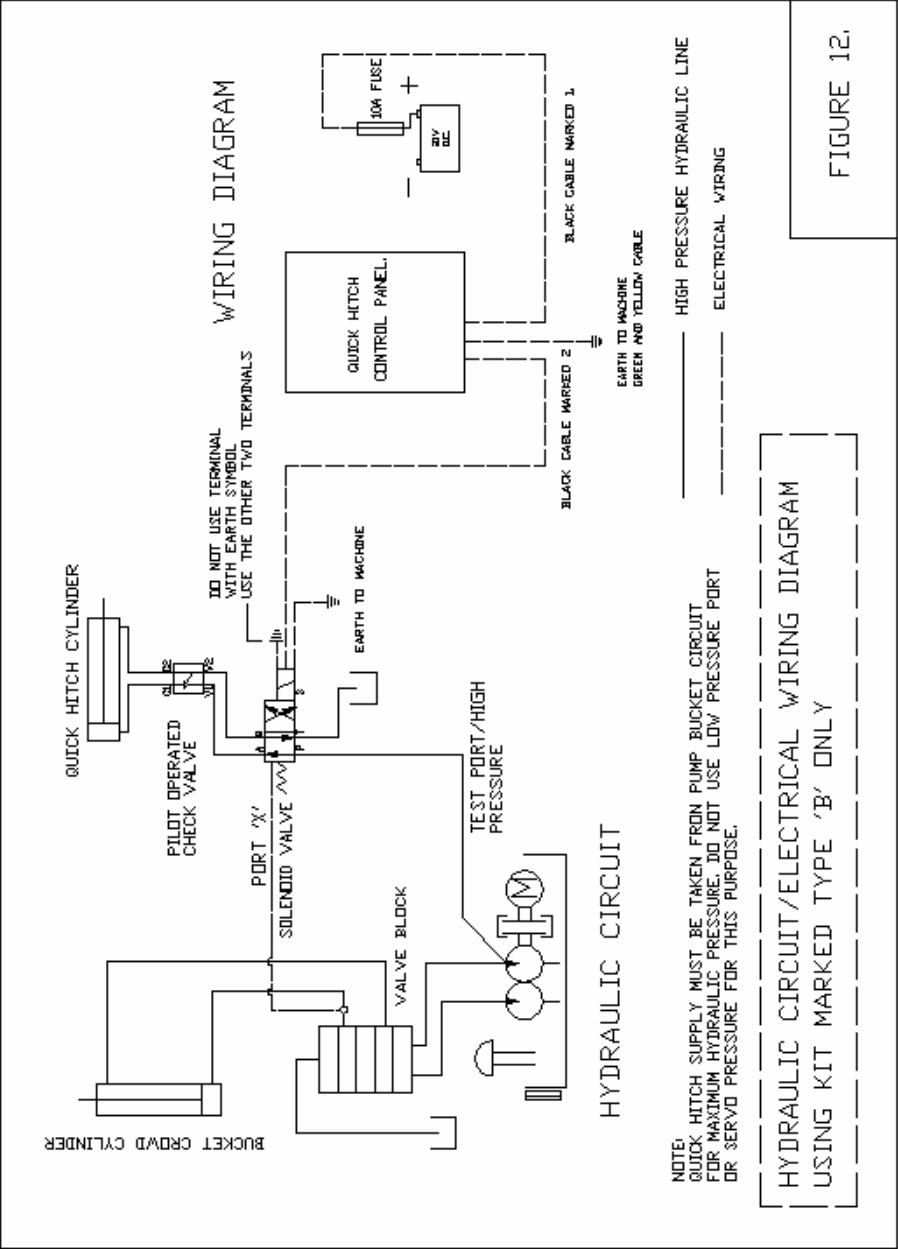
Fig D1. This illustration can be found at the end of this manual.



SPARES DRAWING



HYDRAULIC and ELECTRICAL SCHEMATIC.



Customer Acceptance.

Once you have taken delivery of this product you should complete the details required on this page and return it immediately.

This acceptance form can be returned either direct to, Dromone Engineering LTD at the address shown on back page of this manual, or alternatively return it to your Dromone Engineering distributor.

(Please complete the following details in full, block capitals only).

Customer Name: _____

Customers Address: _____

Hitch Serial Number. _____

Date of Delivery: _____

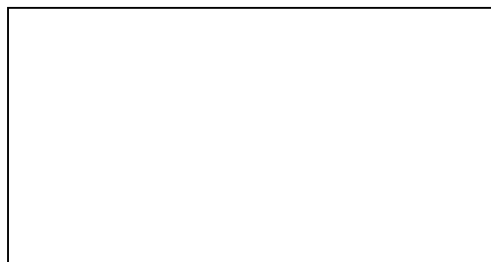
Customer Declaration:

I confirm that the person(s) responsible for the fitting, operation and maintenance of the 'Quick Hitch' detailed above, have read and are fully acquainted with the manufacturers recommendations and operator's responsibilities as described in this manual.

Name: _____

Position: _____

Signature: _____



Distributor Stamp Here.

Product Register.

Certificate Of Compliance.

This product has been fully checked and tested, and found to be in accordance with Dromone Engineering LTD, specifications for quality of finish, methods of assembly, functionality and fitness for purpose.

The above checks have been carried out on the product bearing the following serial number.

Serial Number: _____

This product has been designed to attach and function with the following machine type.

Machine Type: _____

Signed. _____
Dromone Representative. _____ Date. _____

Dromone Engineering LTD

Oldcastle, Co. Meath, Republic of Ireland.

Telephone: 353 (0) 44 9666346

Fax: 353 (0) 44 9666236

Email: sales@dromone.ie

Web site: www.dromone.com